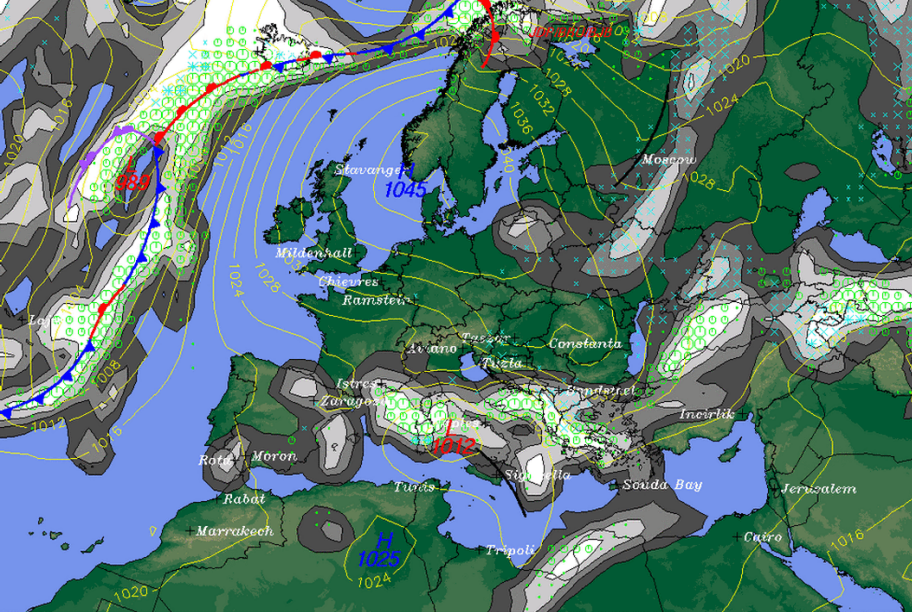


Wellenflüge am Höhenzug Acker / Bruchberg / Brocken, bei Ost-Wind

<u>Erflogene Tage:</u>	08.11.2003	M. Picht	erreichte Höhe: 3000 m >
	17.12.2007	* M. Picht	
	03.01.2008	M. Picht	1600 m
	28.12.2008	* M. Picht + E. Picht/J. Lüer	3000 m 116 + 53 km
	29.12.2008	* Ch. Maul	2700 m 187 km
		H. Rosemann	2600 m 96 km

Mögliche Tage: 12.01.2010 +
13.01.2010 +

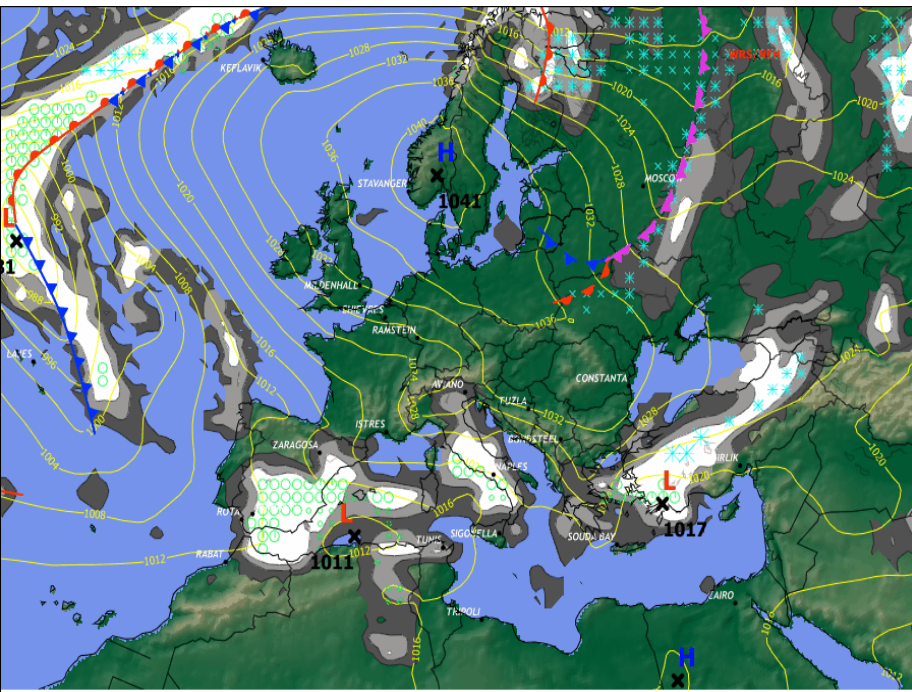


Zentrum des Hochs über Süd Skandinavien = Ost-Wind.

Bei Wanderung des Hochs nach Polen, Drehung des Windes auf Südost.

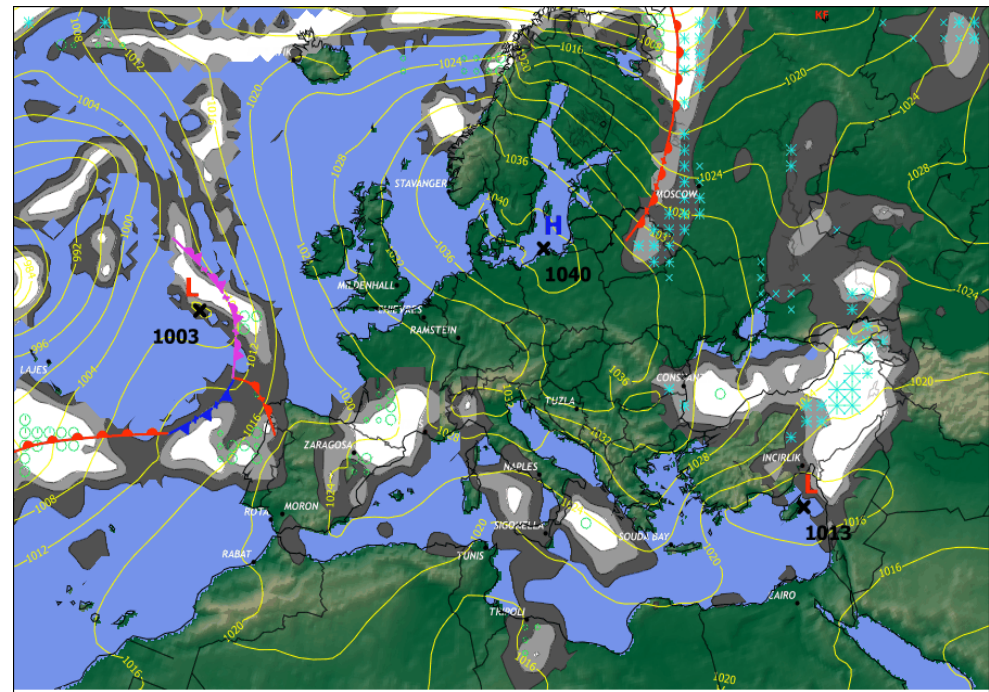
12HR SFC PROG
 VT: 17-DEC/12z POSTED AT: 17/0915Z

MID-CLOUD 060-140 MSL				DYNAMIC PRECIP RATE AT VT			
FEW	SCT	BKN	OCV	.1	.5	1.0	4.0
○	○	○	○	-	-	-	-
○	○	○	○	-	-	-	-



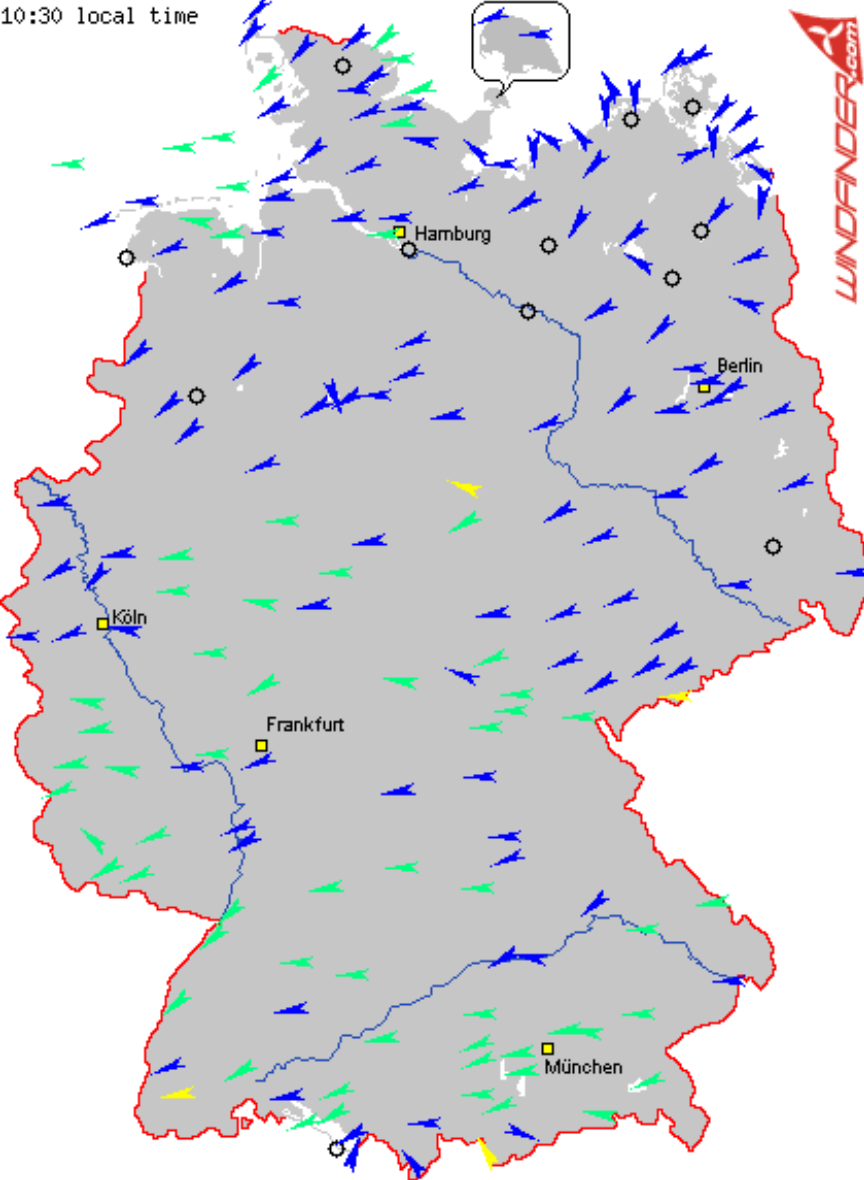
12HR SFC PROG
 VT: 28 DEC 12Z POSTED AT: 28/1144Z

MID-CLOUD 060-140 MSL				DYNAMIC PRECIP RATE AT VT			
FEW	SCT	BKN	OCV	.1	.5	1.0	4.0
○	○	○	○	-	-	-	-
○	○	○	○	-	-	-	-

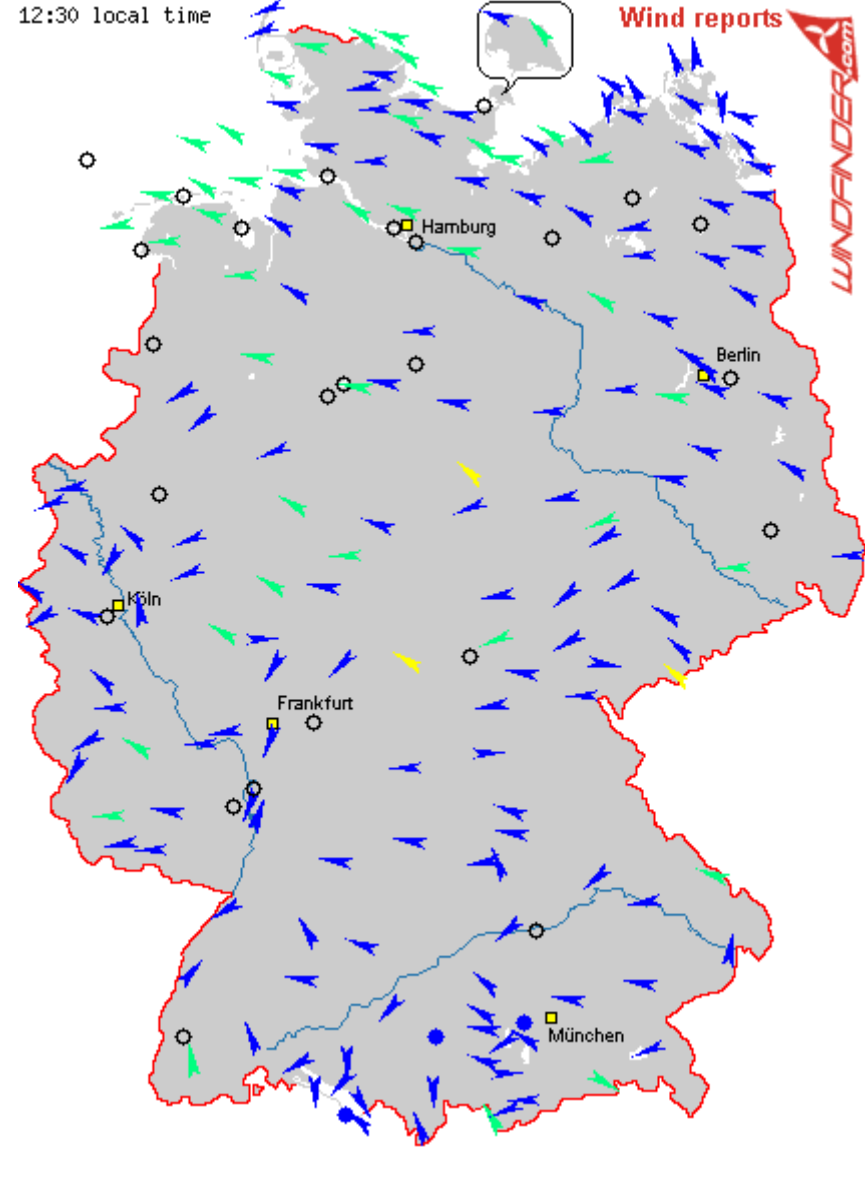


12HR SFC PROG
 VT: 29 DEC 12Z POSTED AT: 29/0800Z

MID-CLOUD 060-140 MSL				DYNAMIC PRECIP RATE AT VT			
FEW	SCT	BKN	OCV	.1	.5	1.0	4.0
○	○	○	○	-	-	-	-
○	○	○	○	-	-	-	-

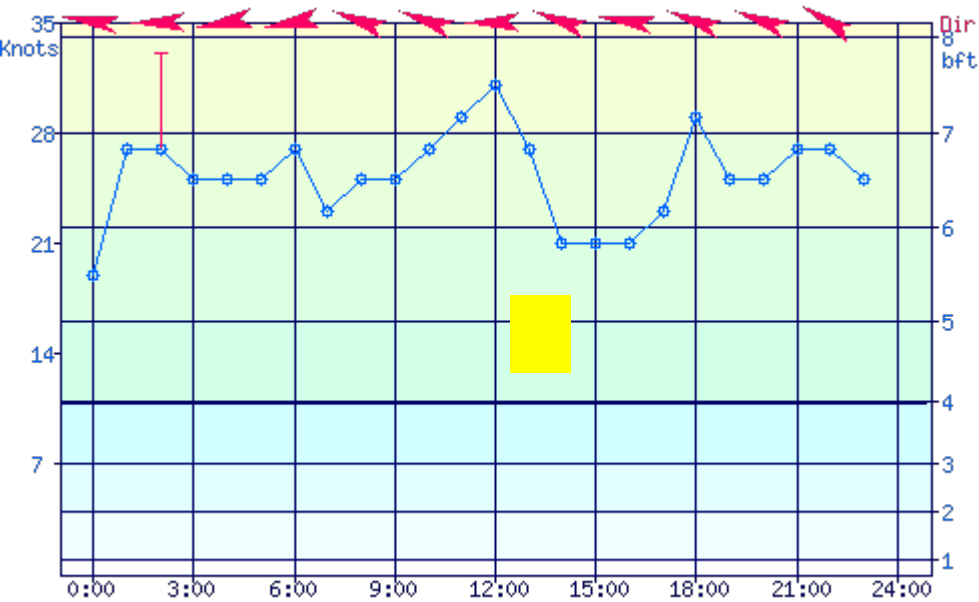


17.12.2007



29.12.2008

Brocken (BROCKEN) 17.12.2007 23:00
Lat: 51.80 Lon: 10.62 Timezone: UTC+1 Sun: 08:23-16:10



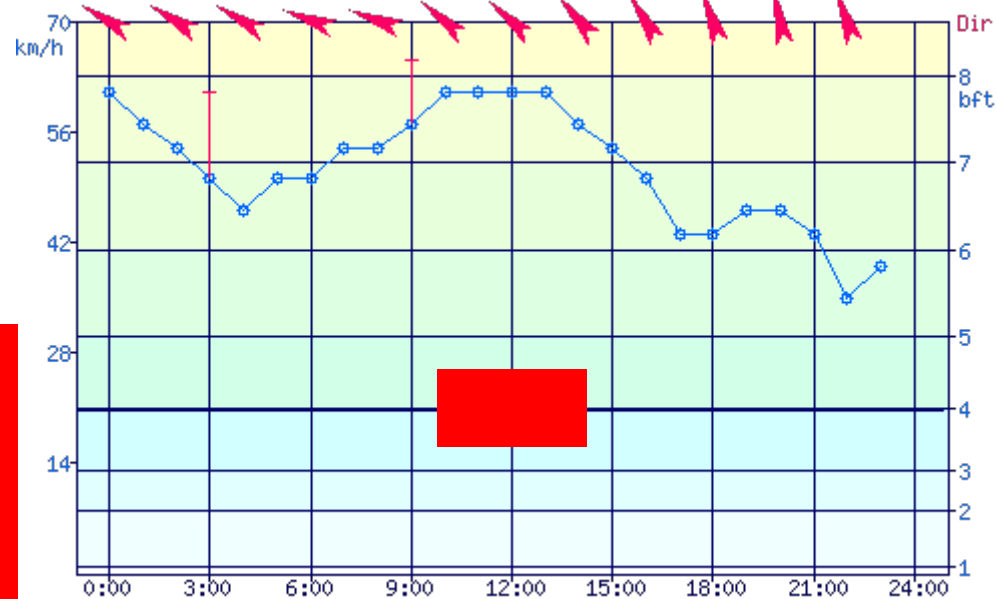
www.windfinder.com

17.12.2007
Flug M. Picht
12:24 – 14:02
1:38 Flugzeit

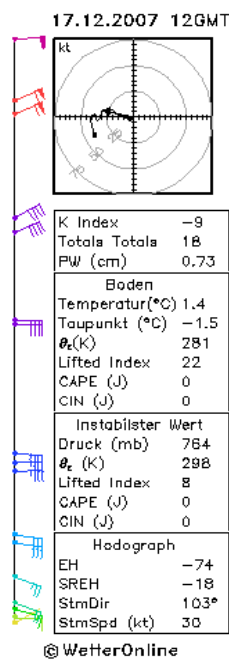
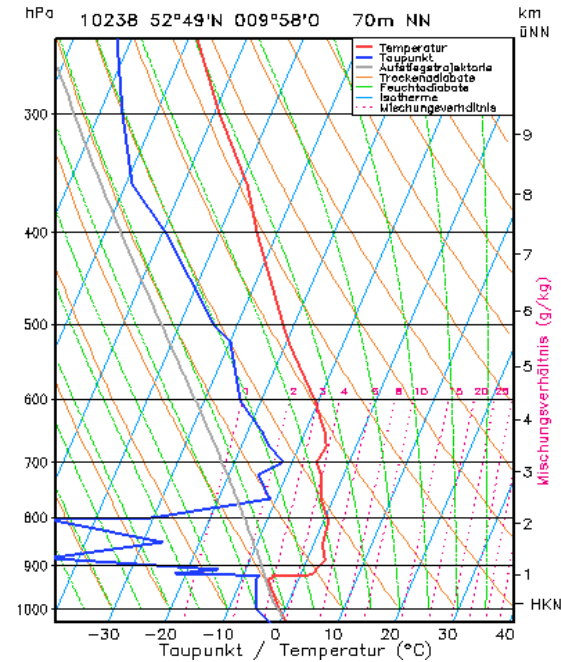
Anschwingen der Welle > 40 – 45 km/h

29.12.2008
Flug Ch. Maul
09:45 – 13:50
4:05 Flugzeit
187 km

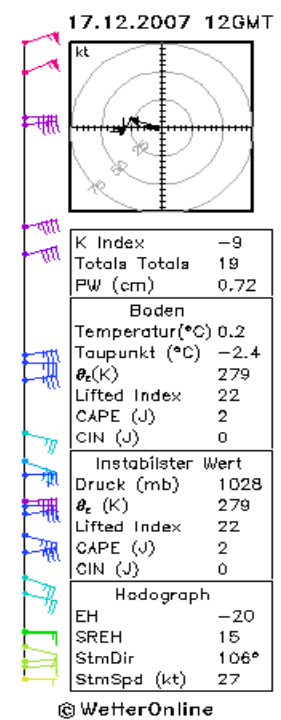
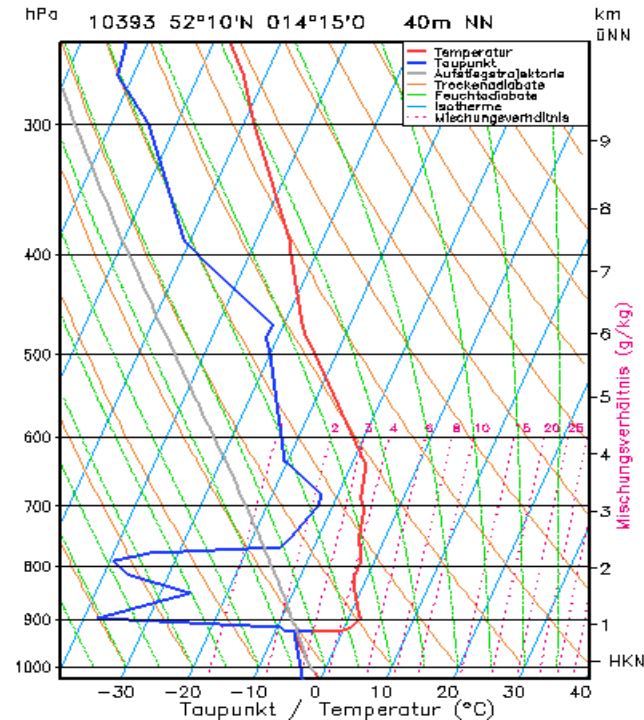
Brocken (BROCKEN) 29.12.2008 23:00
Lat: 51.80 Lon: 10.62 Timezone: UTC+1 Sun: 08:25-16:16



www.windfinder.com



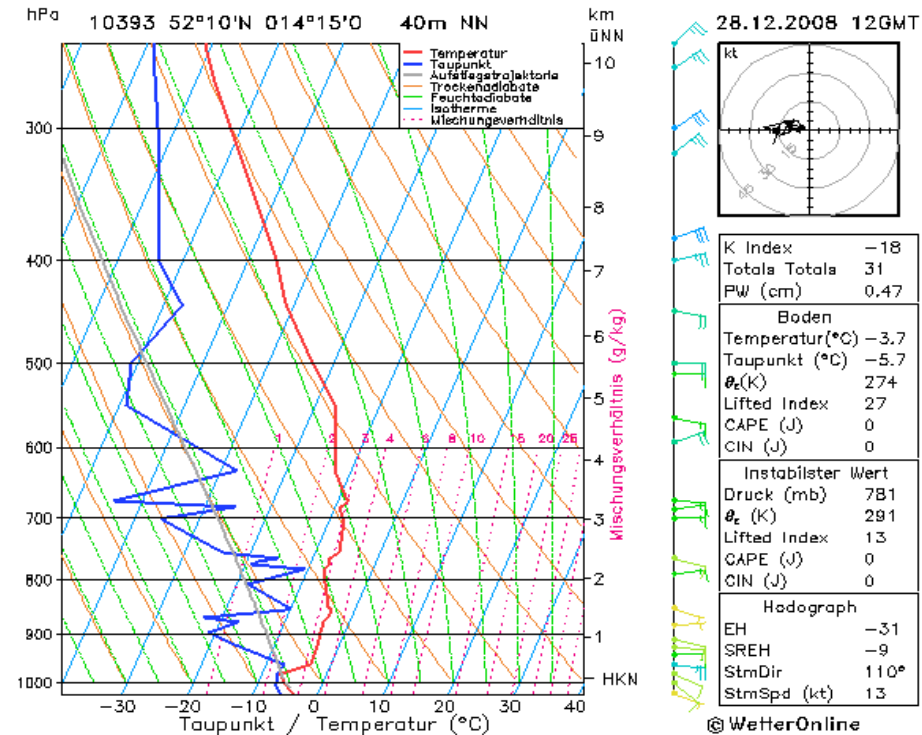
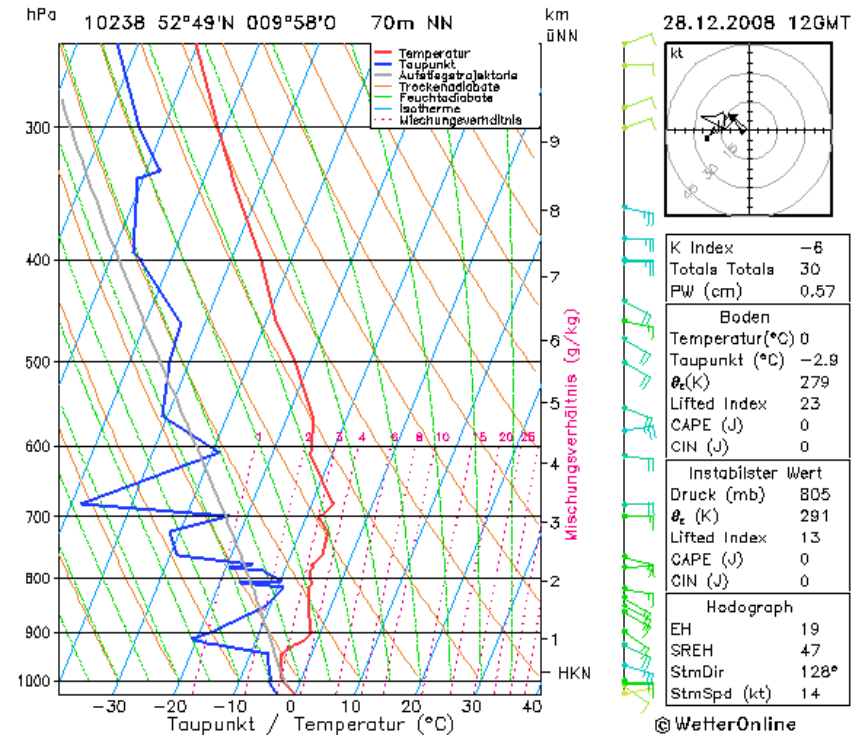
Bergen 12:00



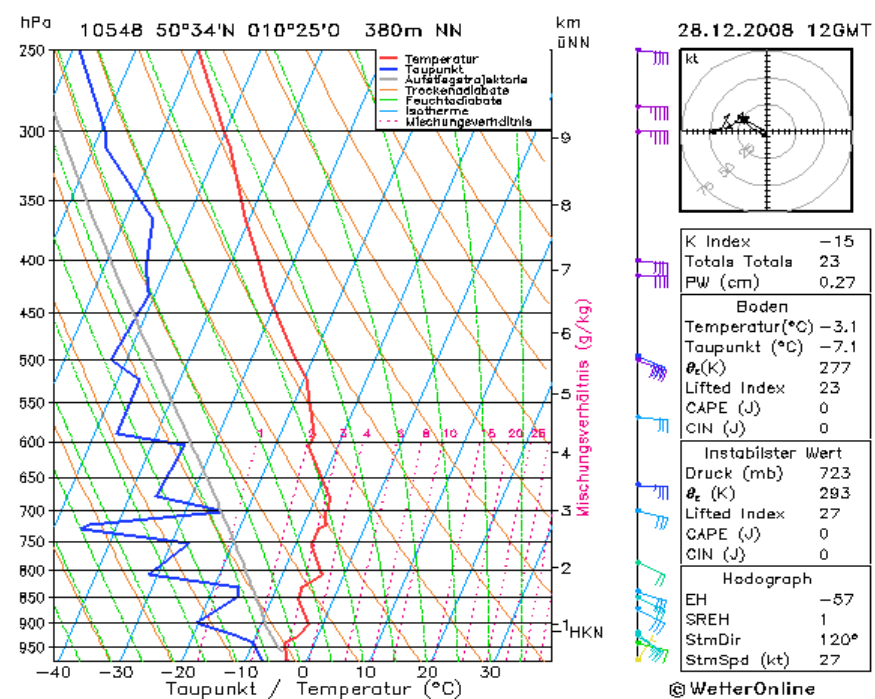
Lindenberg 12:00

Ausgeprägte Inversion in 900 m
Darunter sehr starke Bewölkung , darüber keine Wolken

17.12.2007



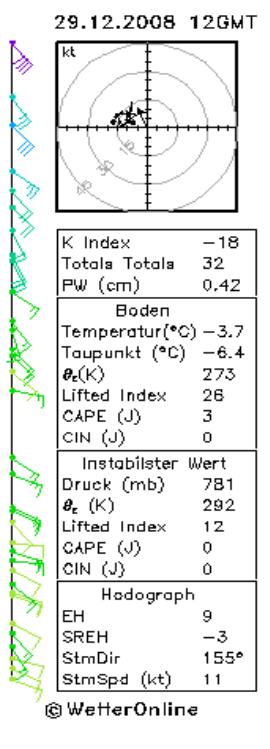
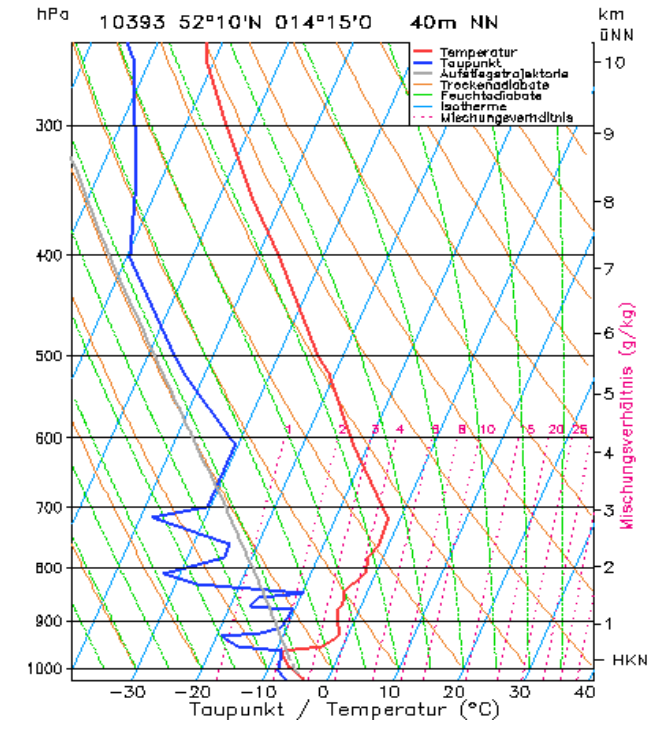
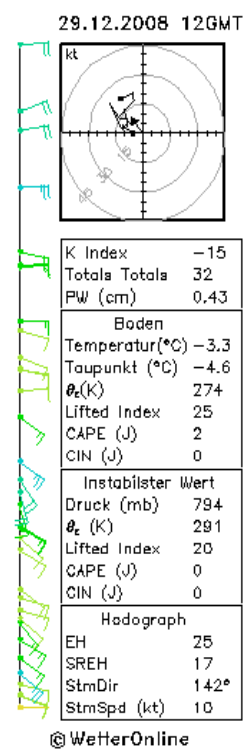
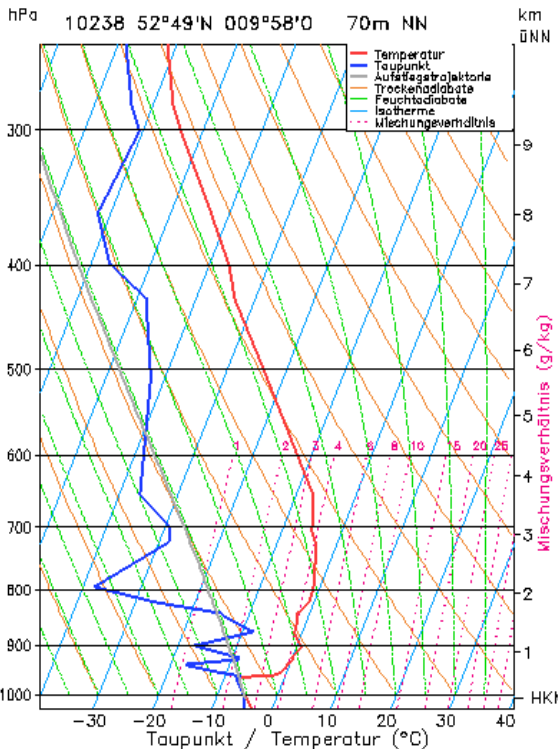
Bergen 12:00



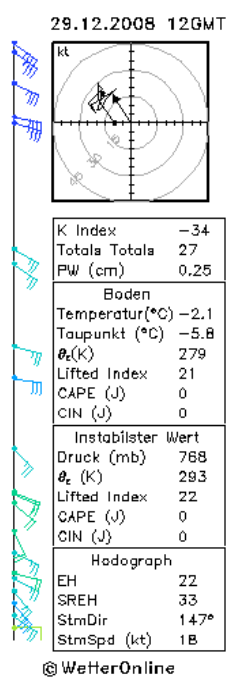
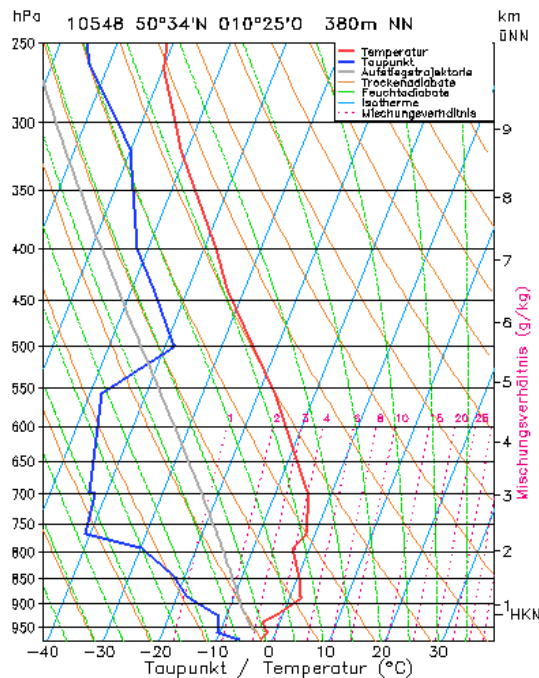
Lindenberg 12:00

28.12.2008

Meiningen 12:00



Bergen 12:00



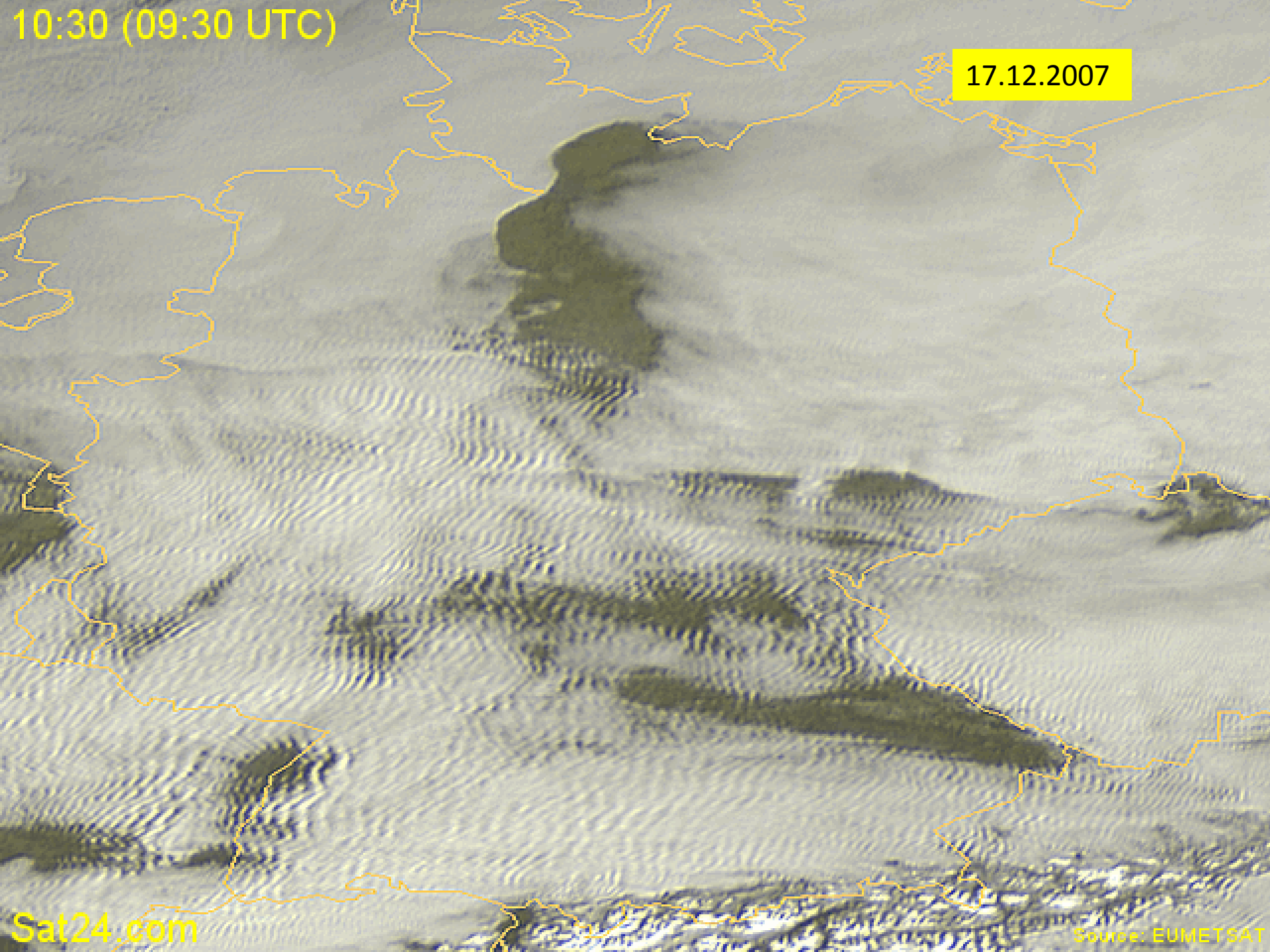
Lindenberg 12:00

29.12.2008

Meiningen 12:00

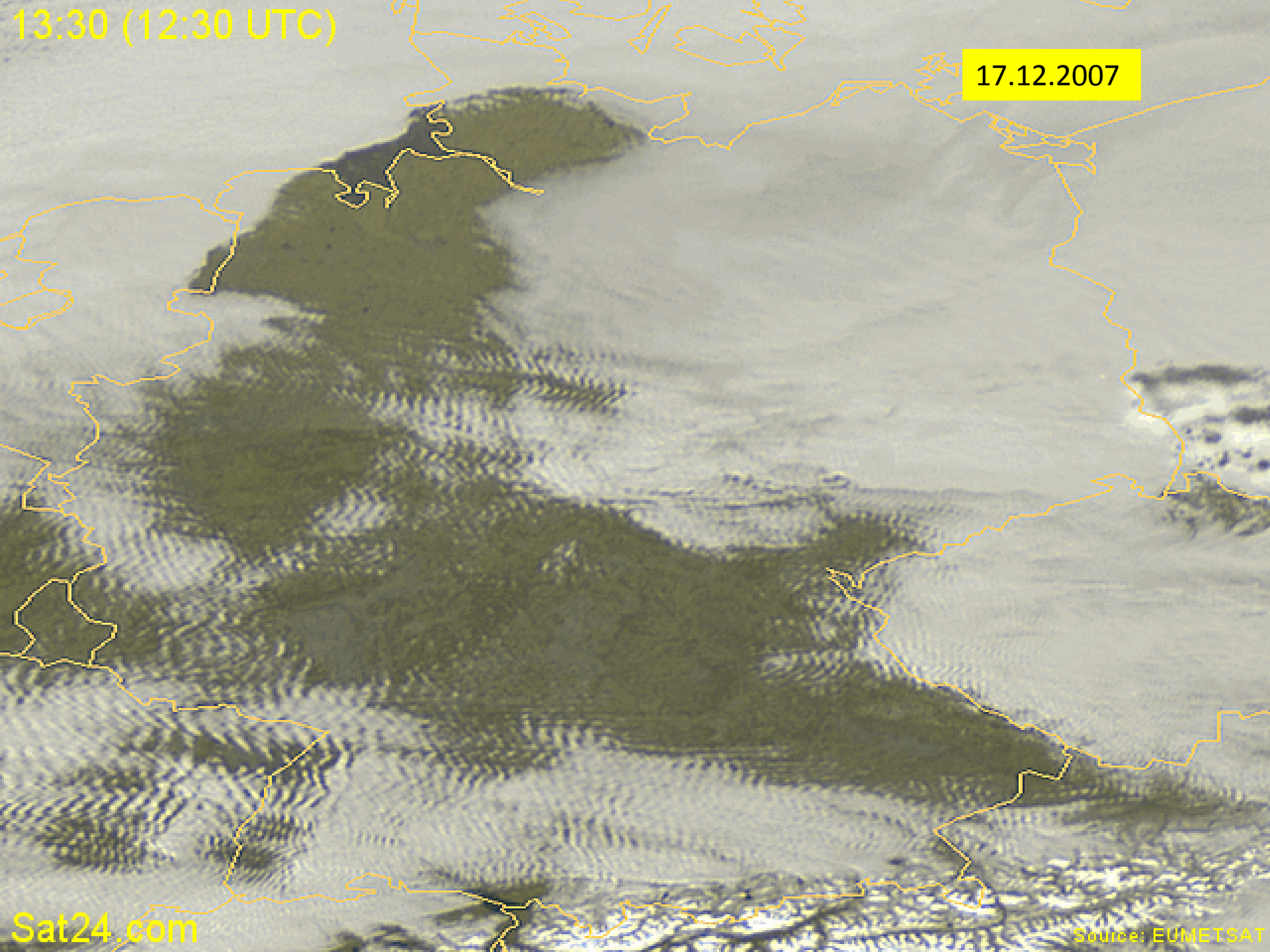
10:30 (09:30 UTC)


17.12.2007



13:30 (12:30 UTC)

17.12.2007

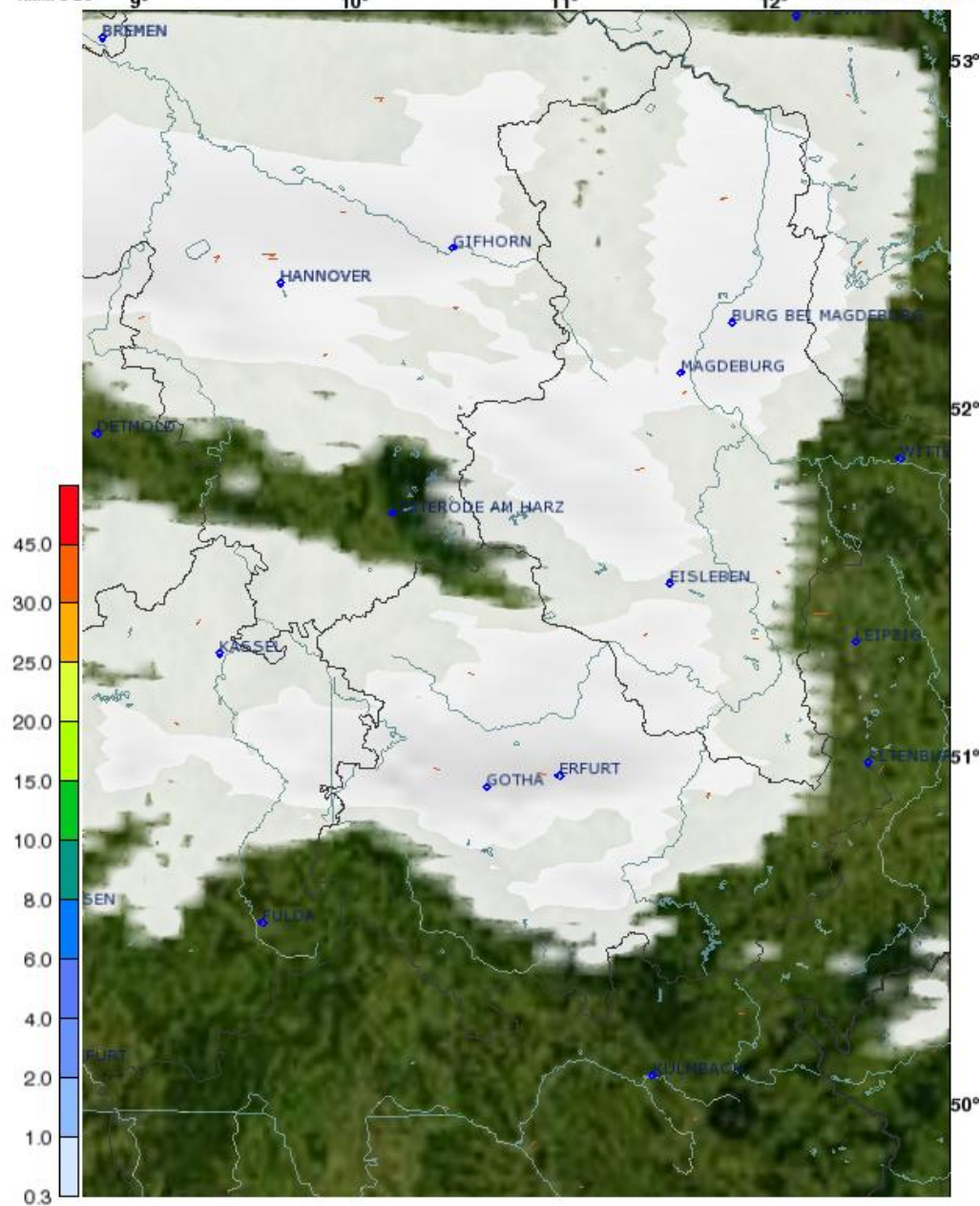




17.12.2007







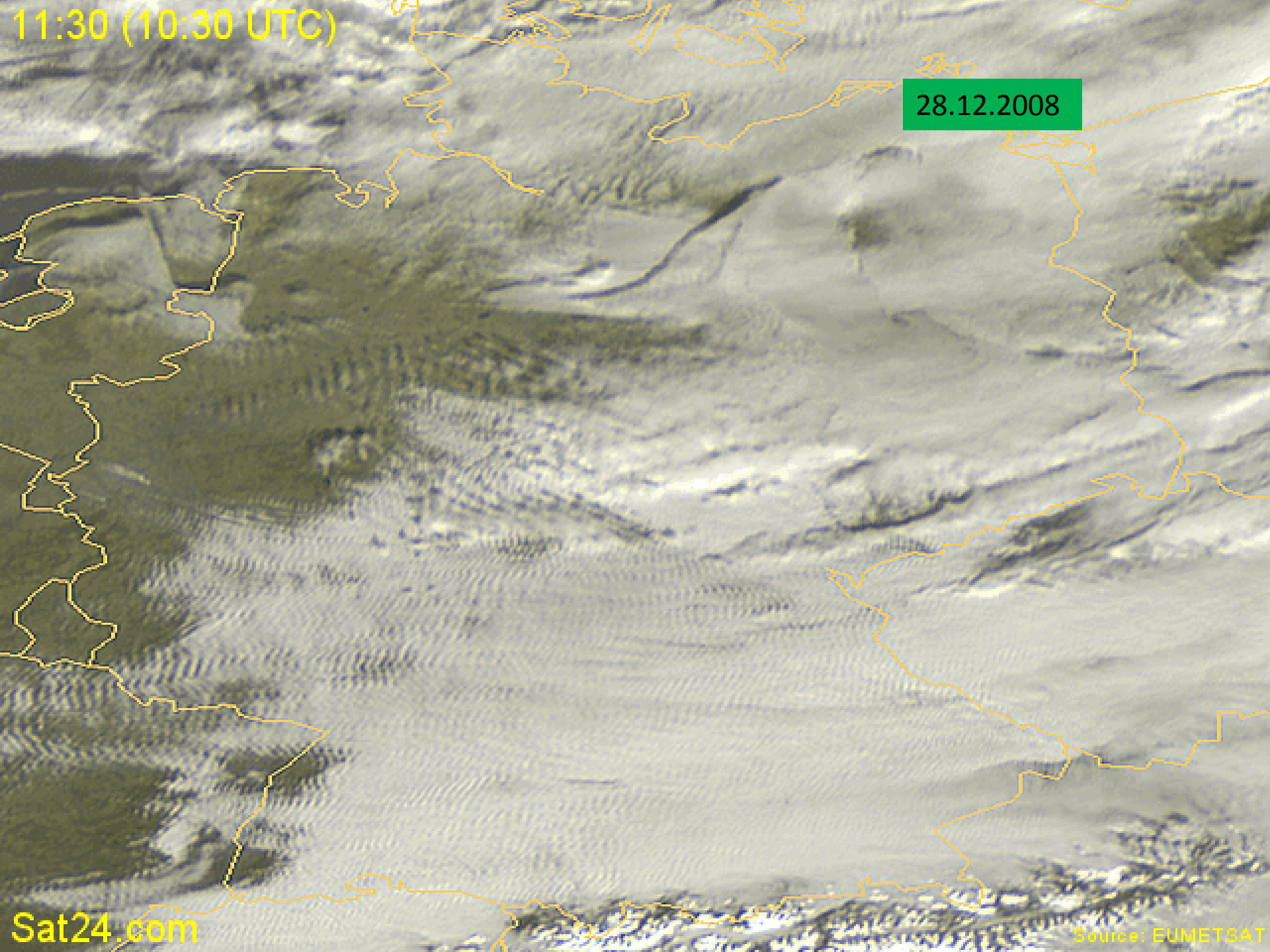
Bewölkungsvorhersage

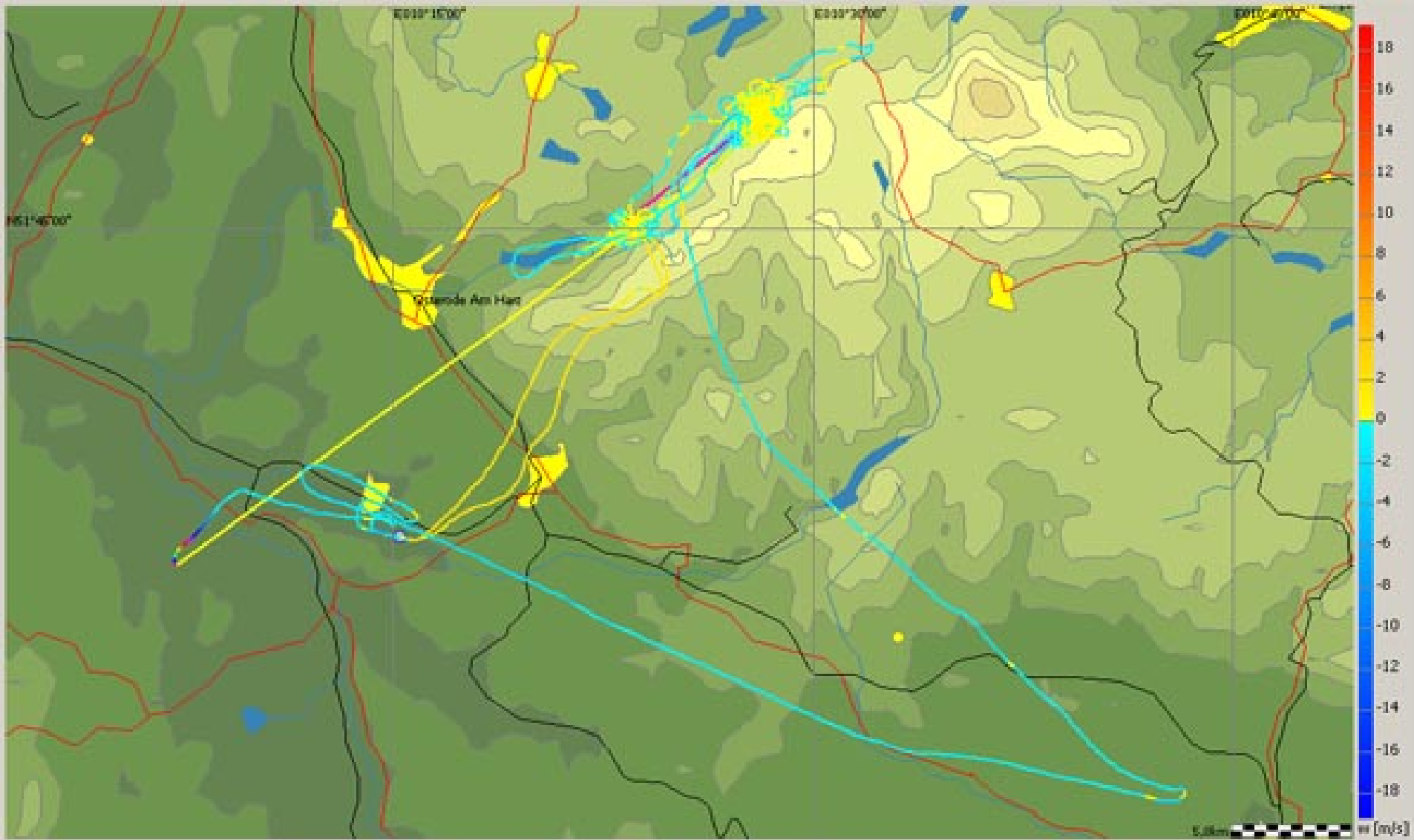
Lee-Effekt am Harzrand

28.12.2008

11:30 (10:30 UTC)

28.12.2008





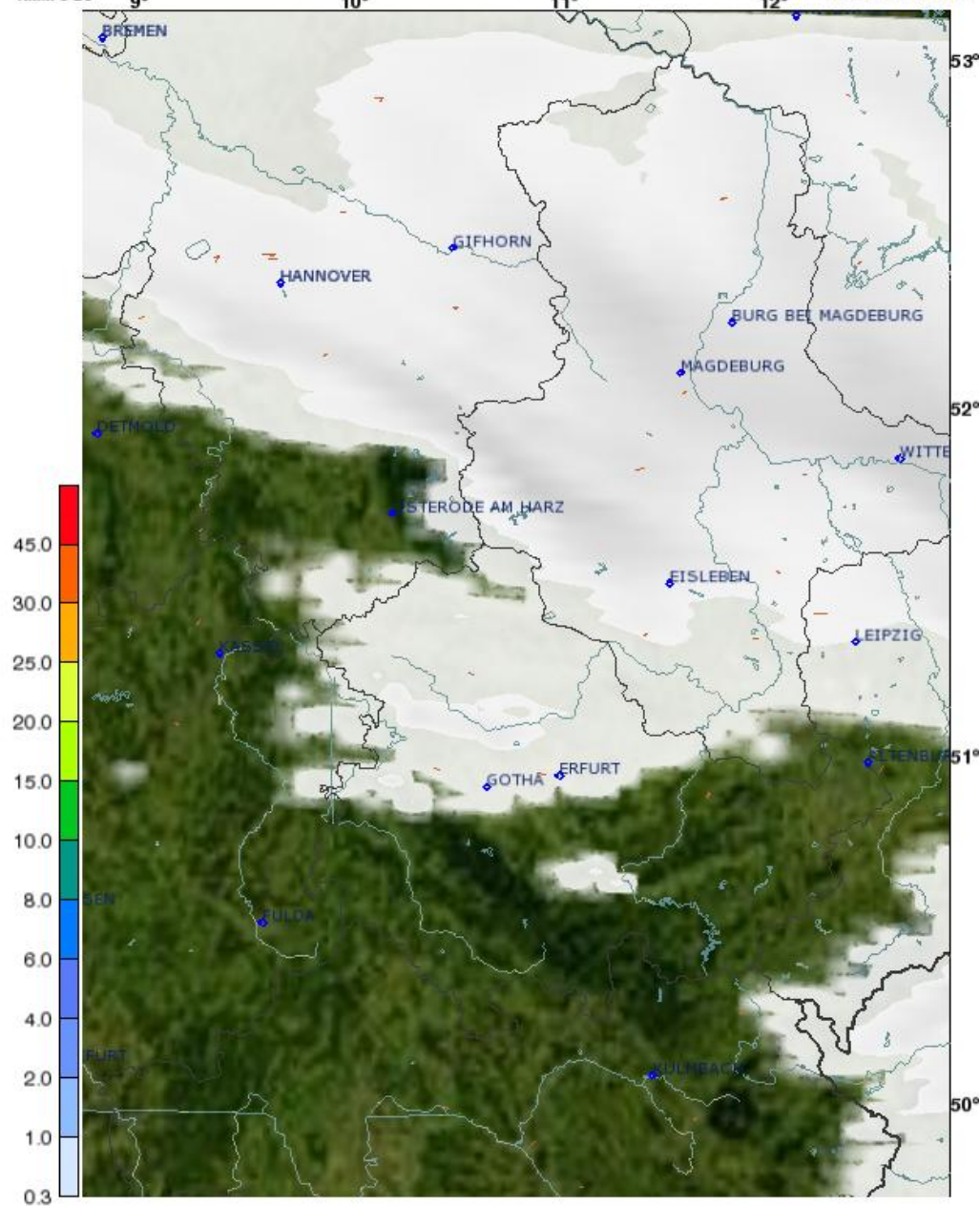
28.12.2008

M. Picht + E.Picht / J. Lür

Janus 53 km / 116 km



28.12.2008



Bewölkungsvorhersage

Lee-Effekt am Harzrand

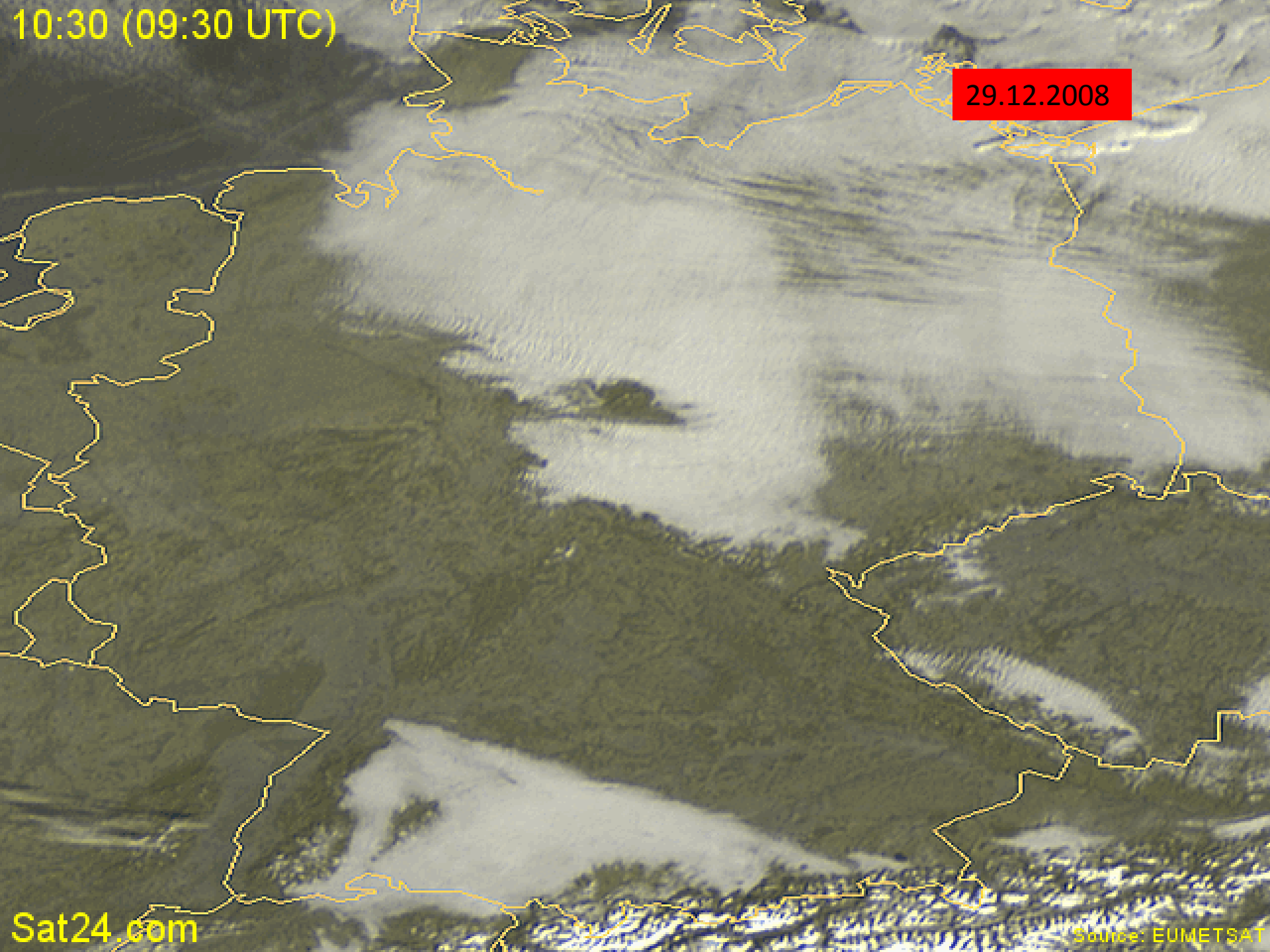
29.12.2008

10:30 (09:30 UTC)

29.12.2008

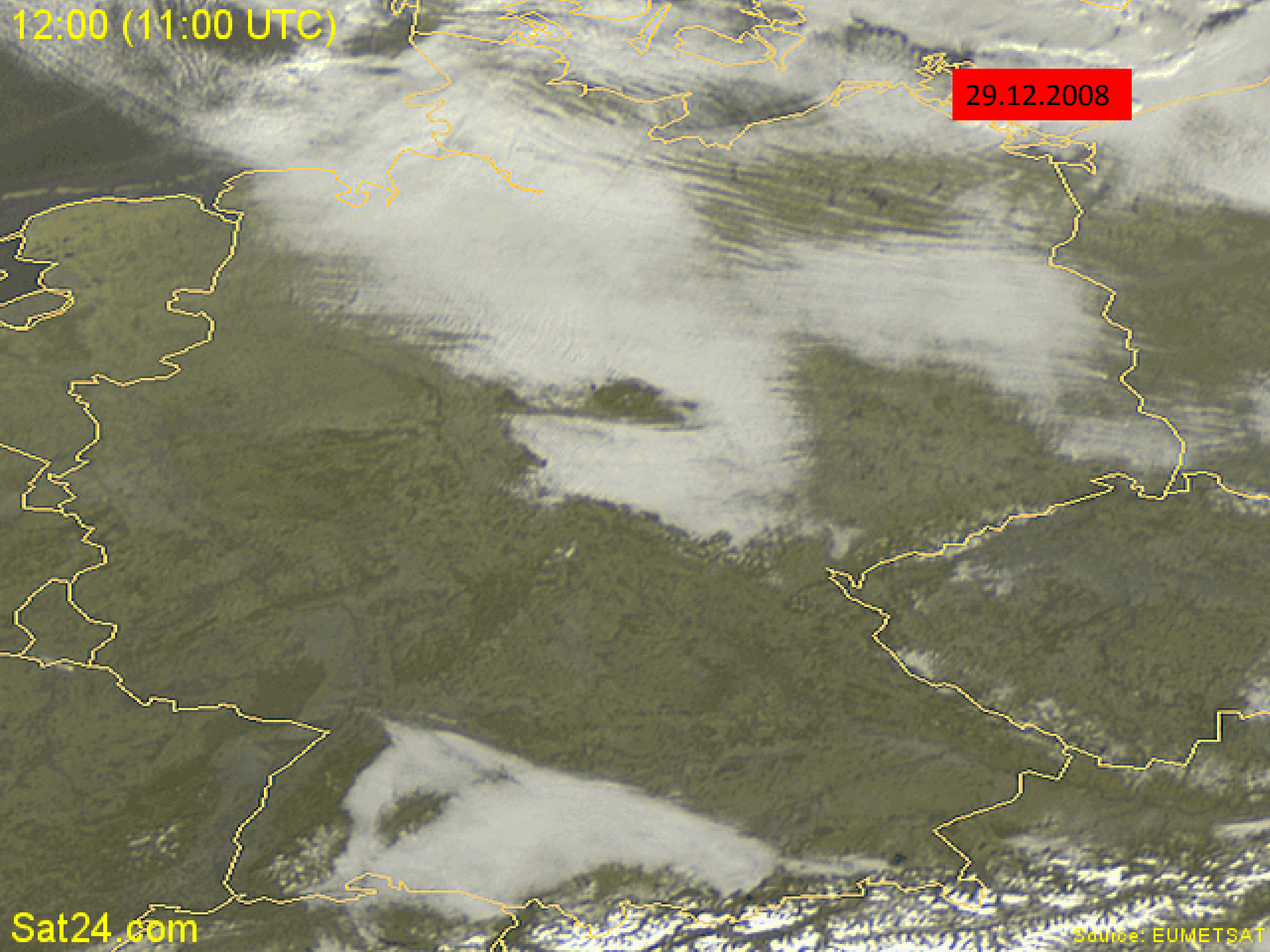
Sat24.com

Source: EUMETSAT



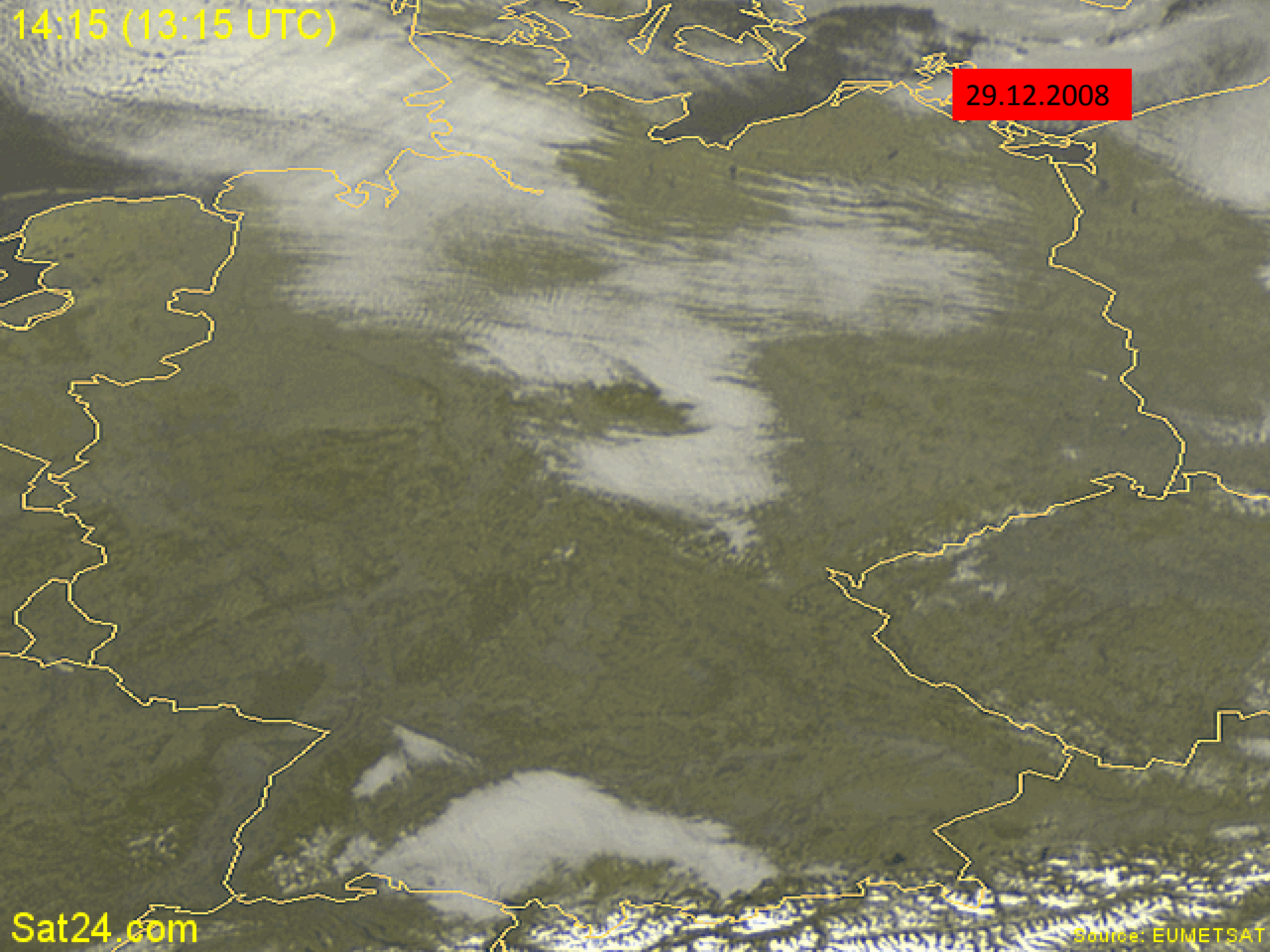
12:00 (11:00 UTC)

29.12.2008



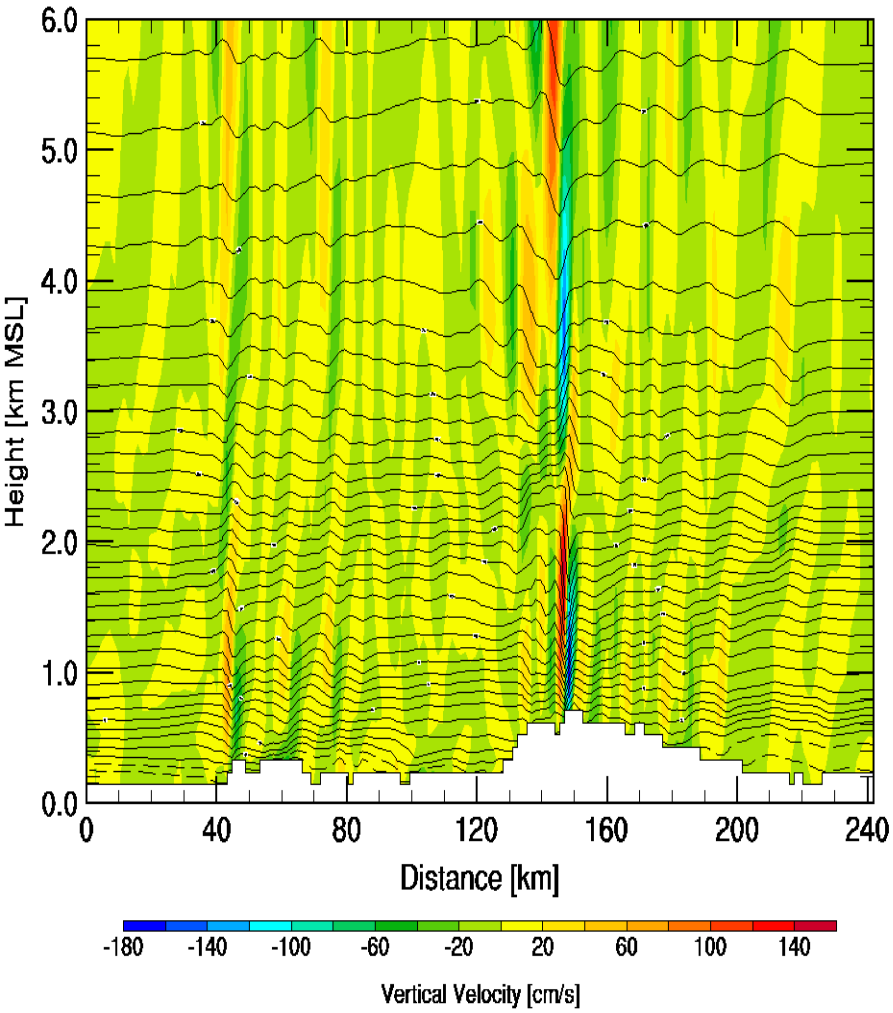
14:15 (13:15 UTC)

29.12.2008



Wind-Parallel Section at Max W: Vertical Velocity & Pot.Temp. (C)

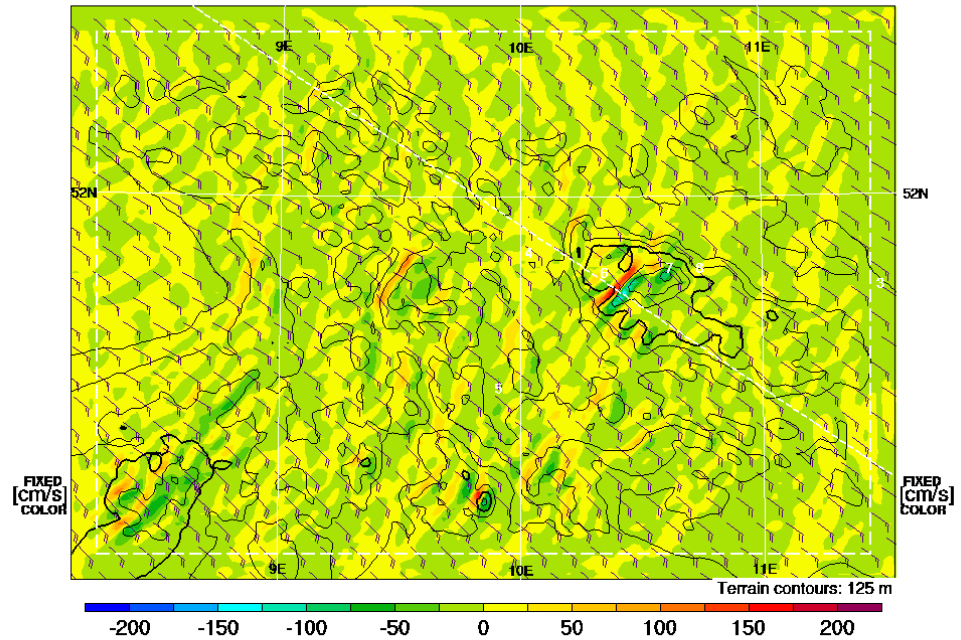
Valid 1600 CET (1500Z) MON 29 Dec 2008 [33hrFcst@1759z]
boxWmax=174@51.75,10.39,1737m



29.12.2008

Vertical Velocity & Wind [kt] at 850mb

Valid 1600 CET (1500Z) MON 29 Dec 2008 [33hrFcst@1759z]
boxWmax=174@51.75,10.39,1737m

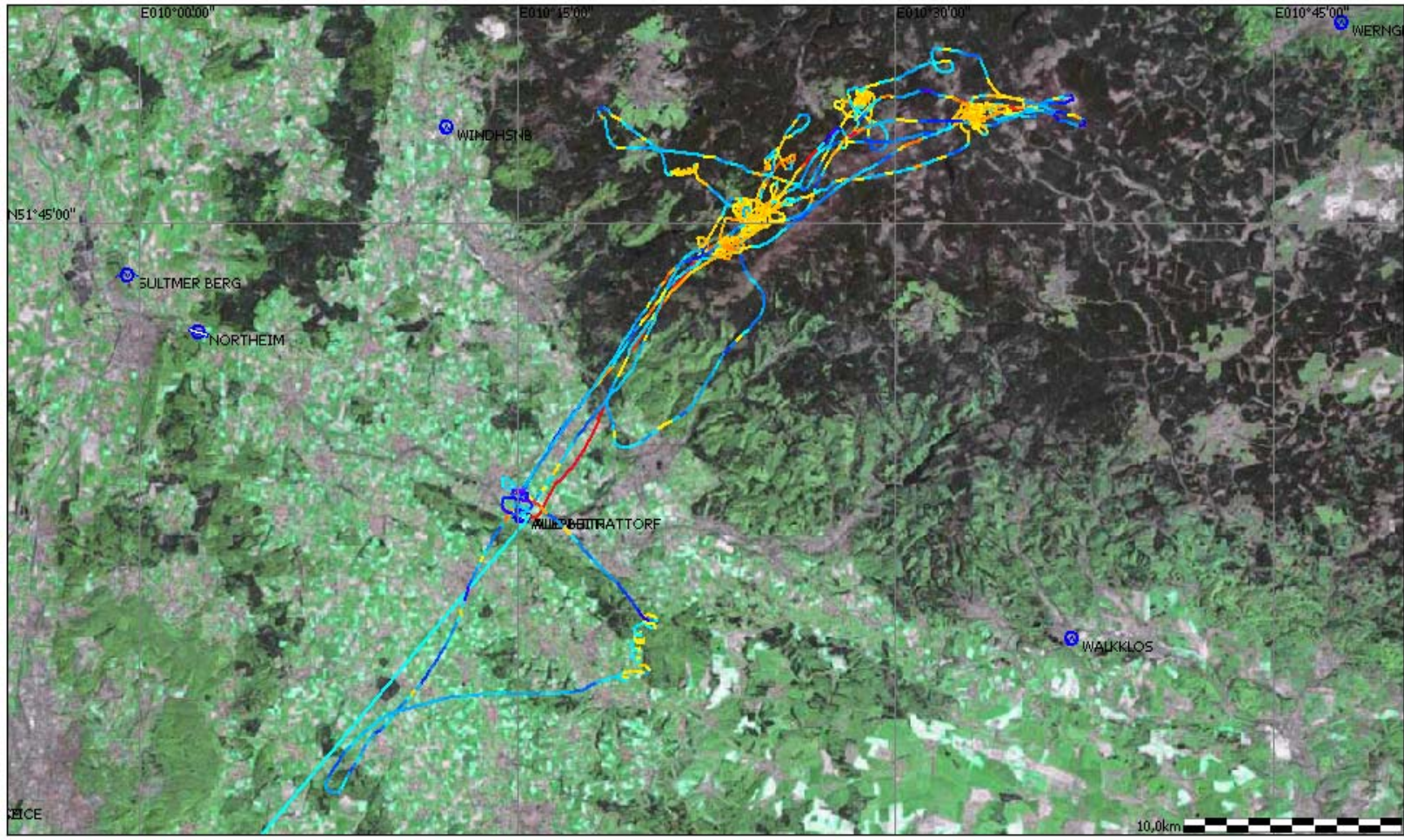


29.12.2008 Ch. Maul 187 km

Flugweg

CM 29.12.2008.igc

Datum: Montag, 29. Dezember 2008
Pilot: Tobias
Segelflugzeug: LS3





29.12.2008













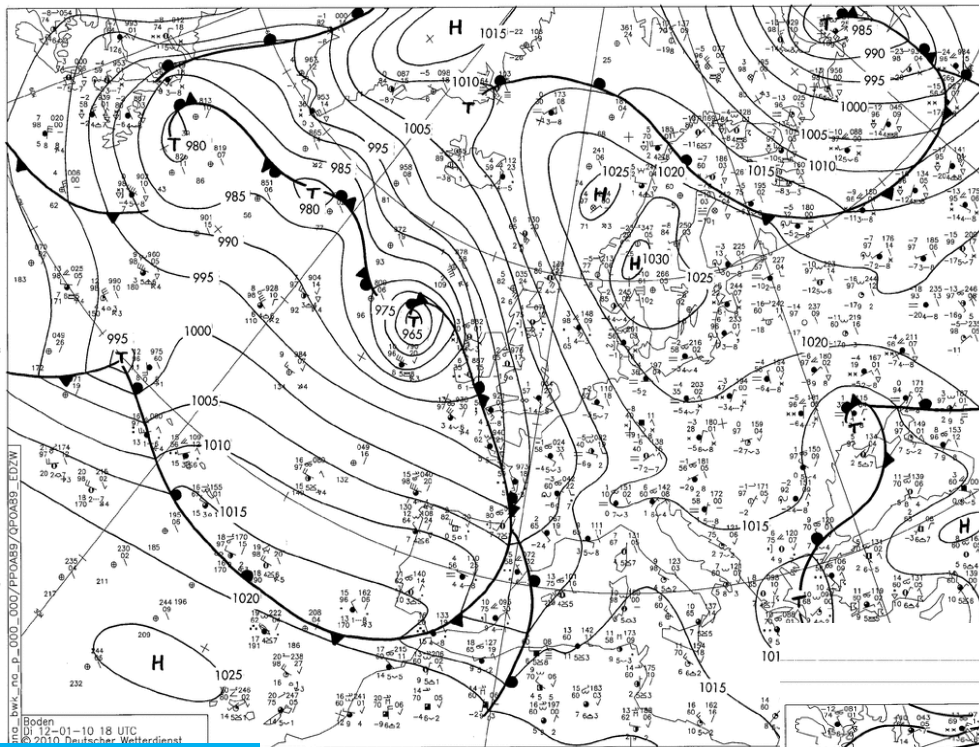






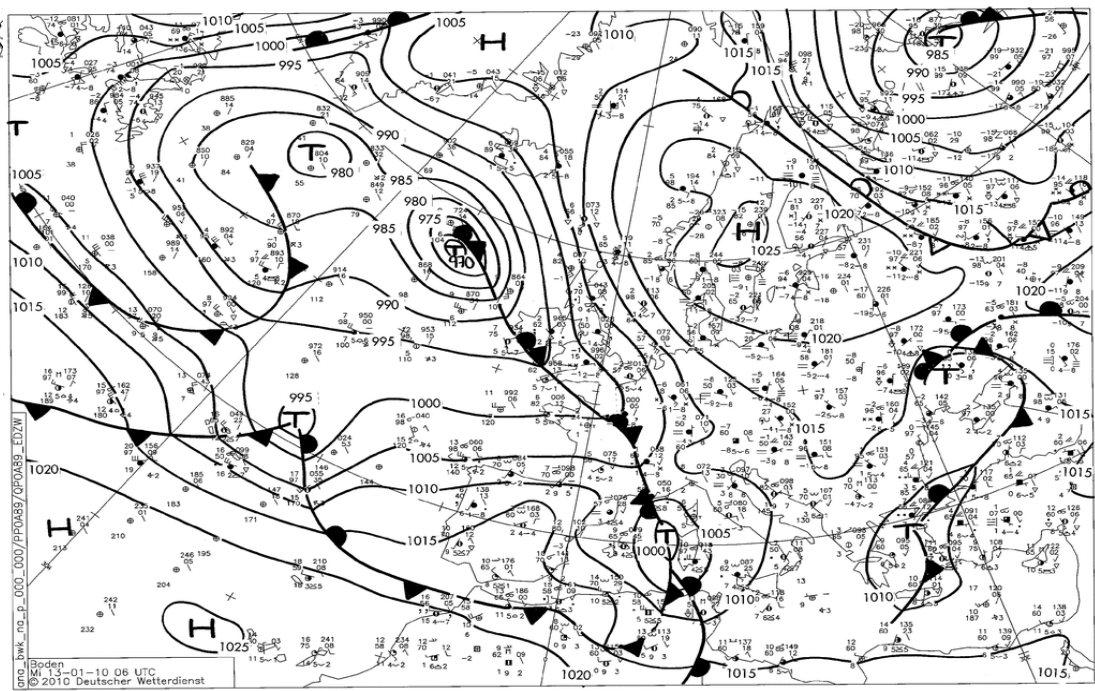




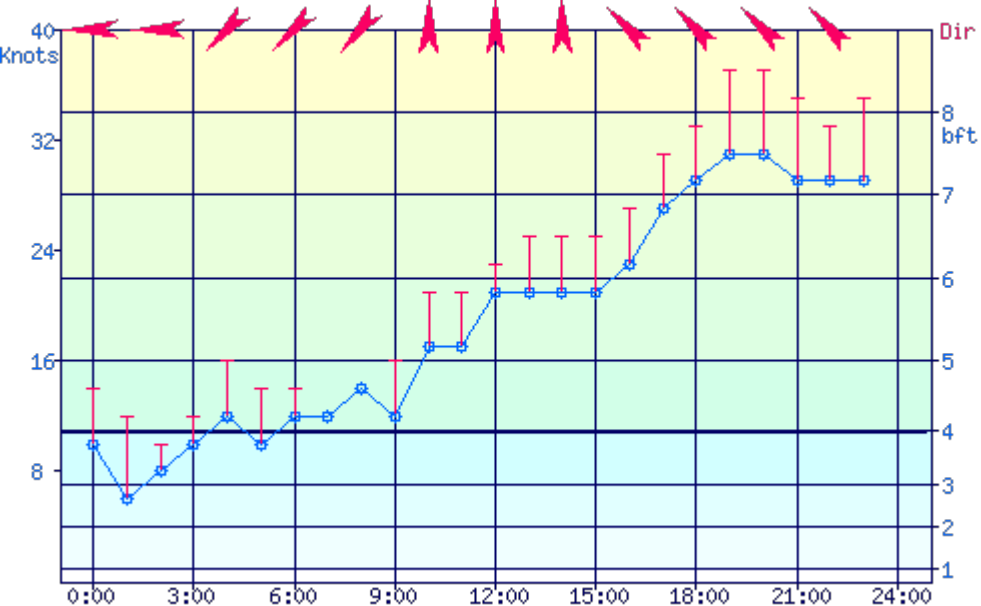


12.01.2010

13.01.2010



Brocken (BROCKEN) 12.01.2010 23:00
Lat: 51.80 Lon: 10.62 Timezone: UTC+1 Sun: 08:19-16:33

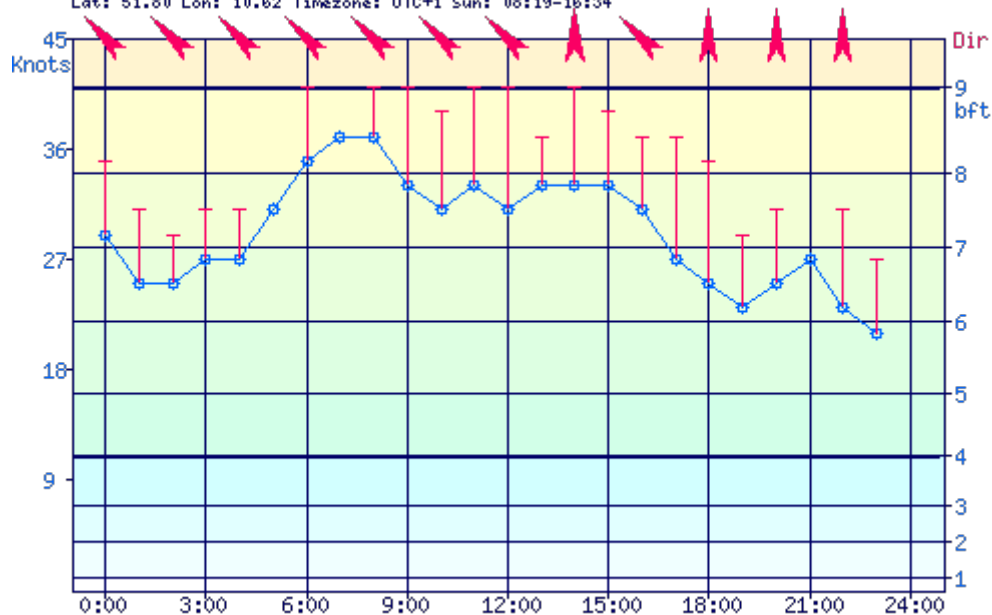


www.windfinder.com

13.01.2010

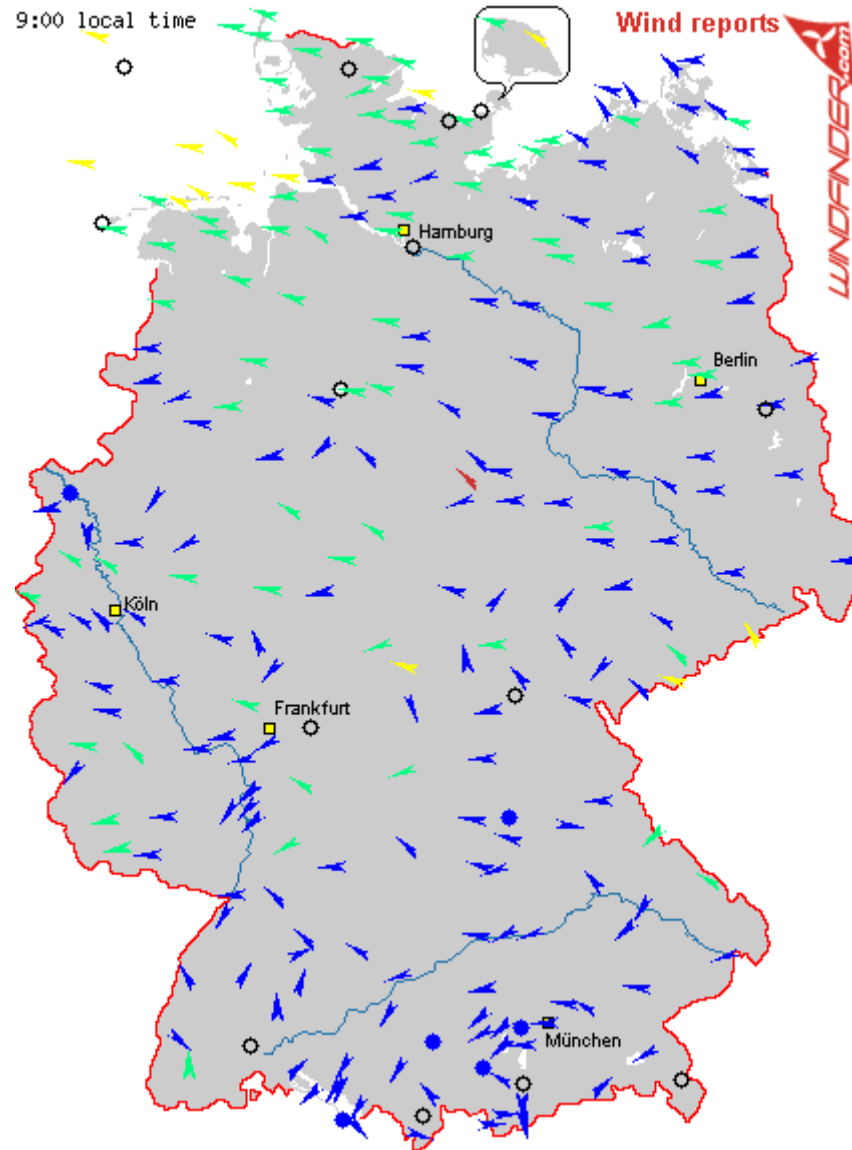
12.01.2010

Brocken (BROCKEN) 13.01.2010 23:00
Lat: 51.80 Lon: 10.62 Timezone: UTC+1 Sun: 08:19-16:34



www.windfinder.com

13.01.2010



Hannover (Hanover)



Haus

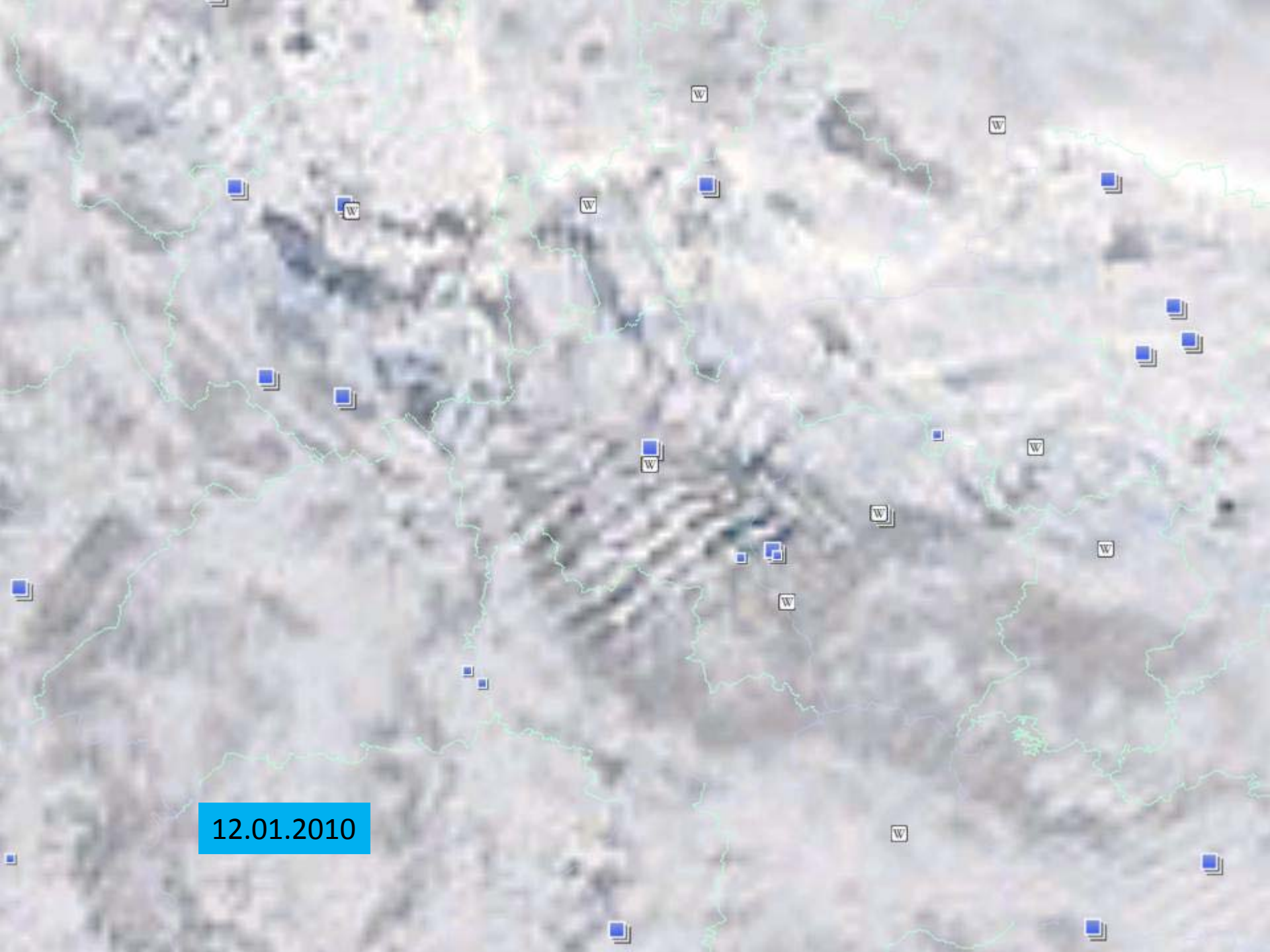
12.01.2010

© 2010 Tele Atlas
Image © 2010 GeoContent
© 2010 PPWK
© 2010 Europa Technologies

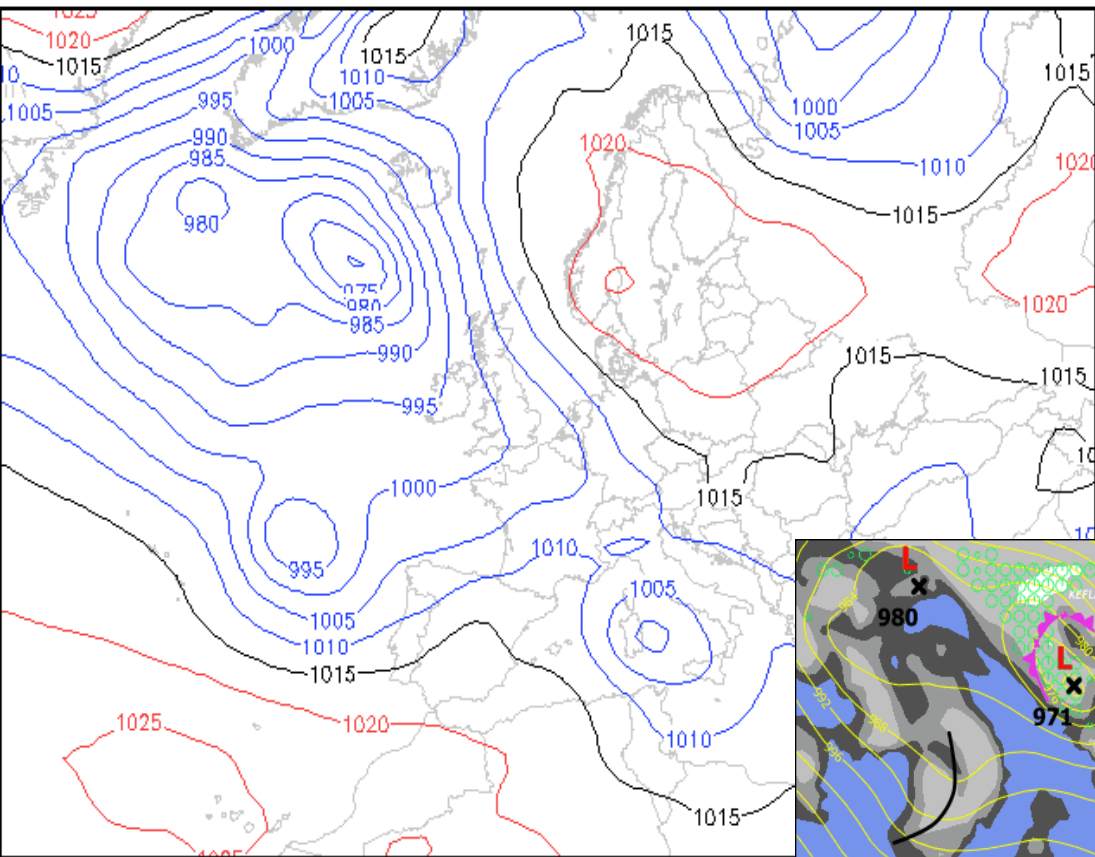
Google

51°48'44.00" N 10°26'12.07" E elev 0 m

Eye alt 172.76 km



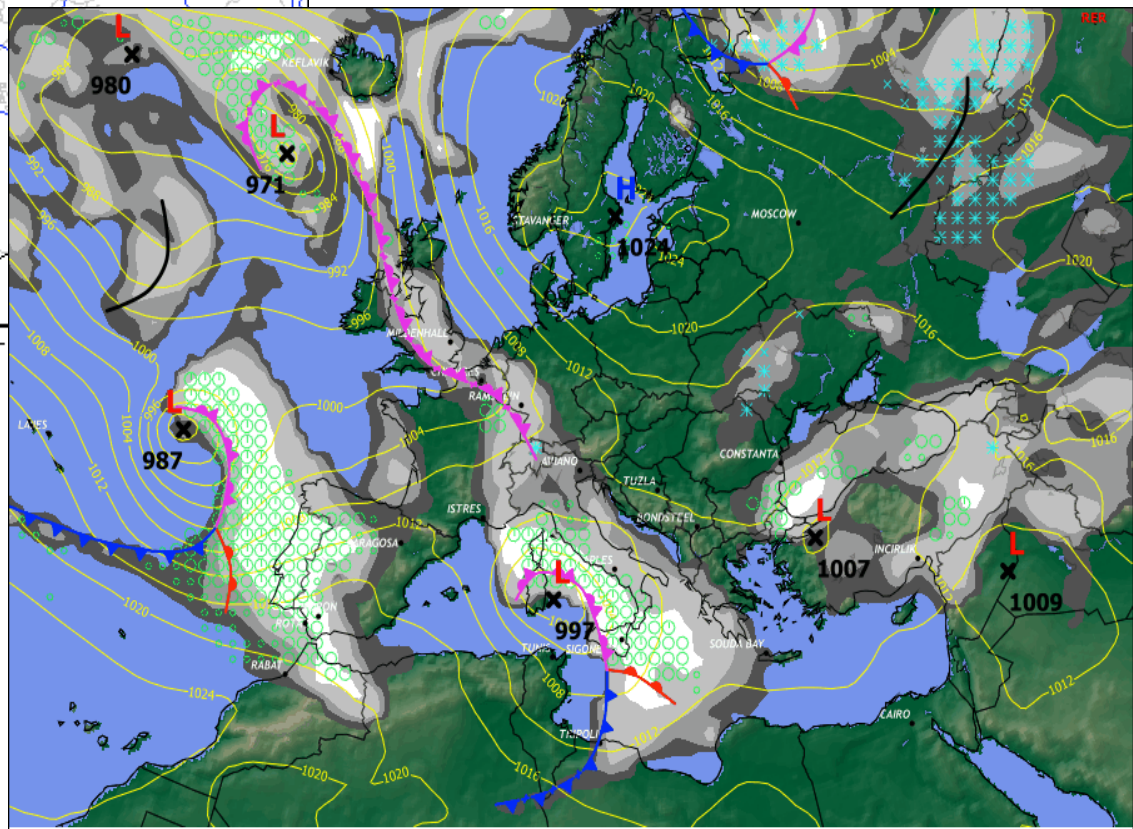
12.01.2010



13.01.2010

Bodendruck GFS (hPa)

Mi 13.01.10 12 GMT
WetterOnline

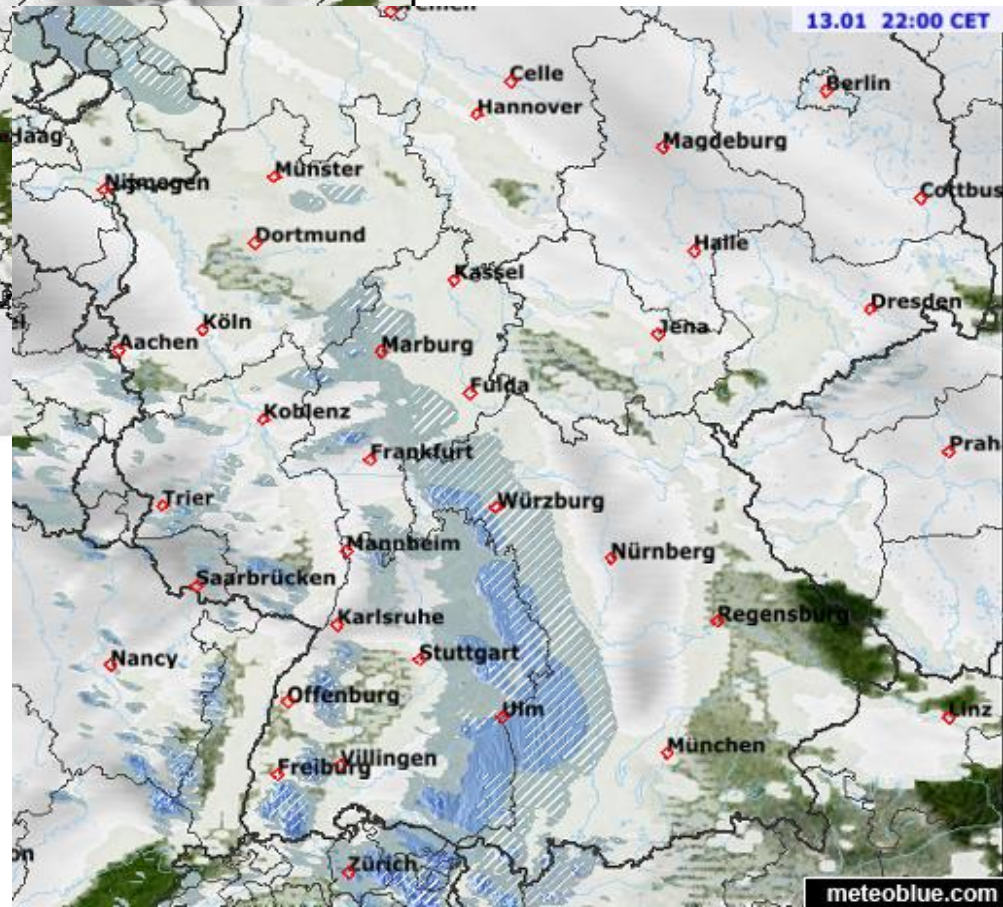
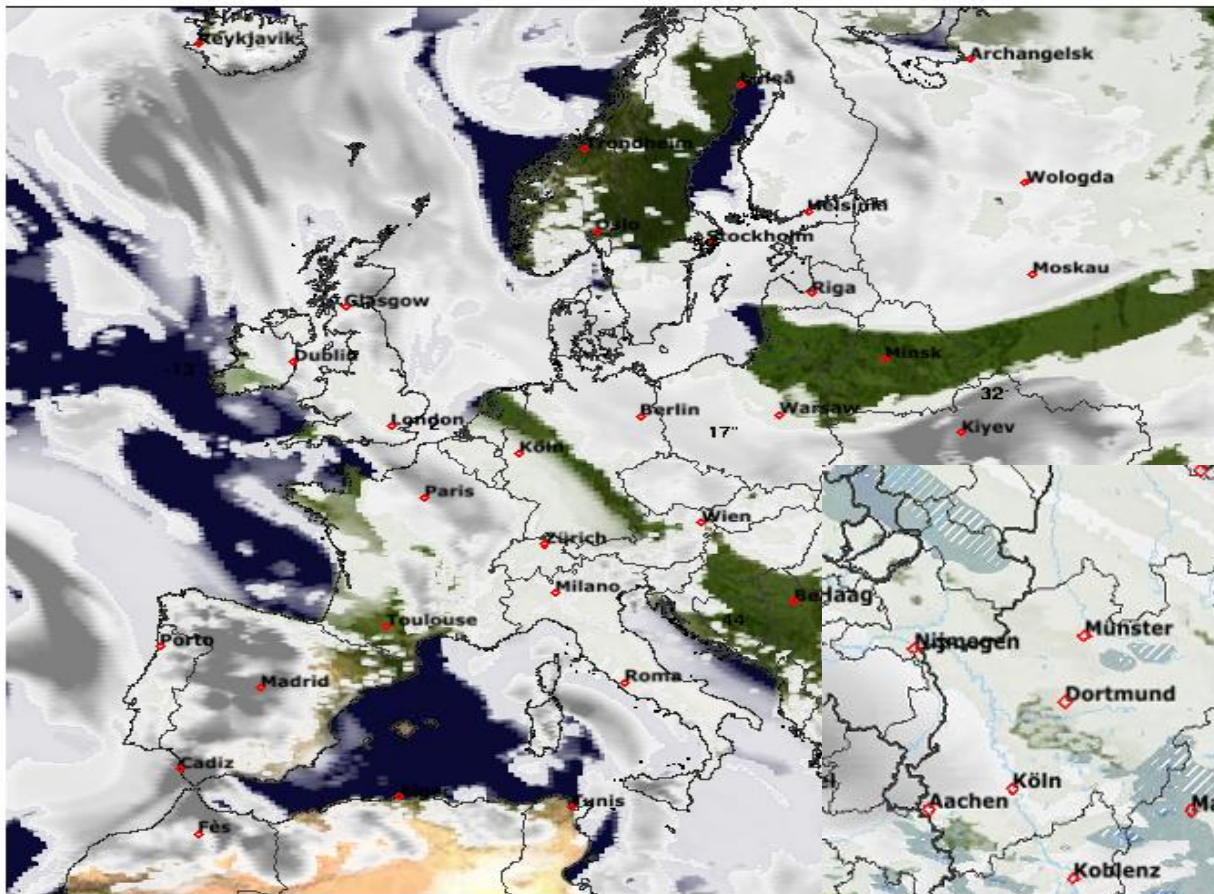


12HR SFC PROG
VT: 13 JAN 12Z POSTED AT: 13/0854Z

MID-CLOUD 060-140 MSL				DYNAMIC PRECIP RATE AT VT			
FEW	SCT	BKN	OVC	0.03	0.1	0.5	4.0
				•	○	★	★
				×	×	*	*

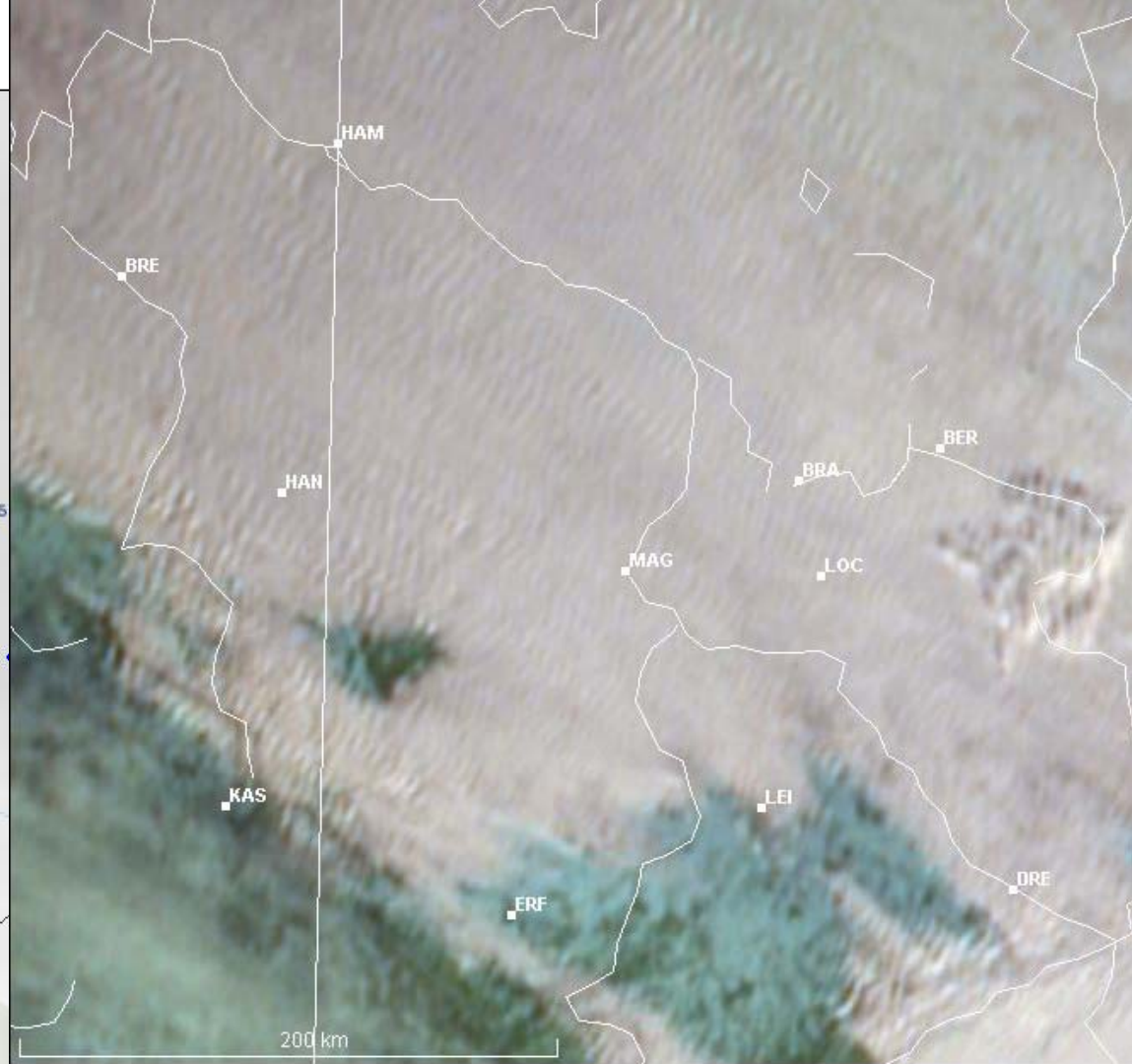
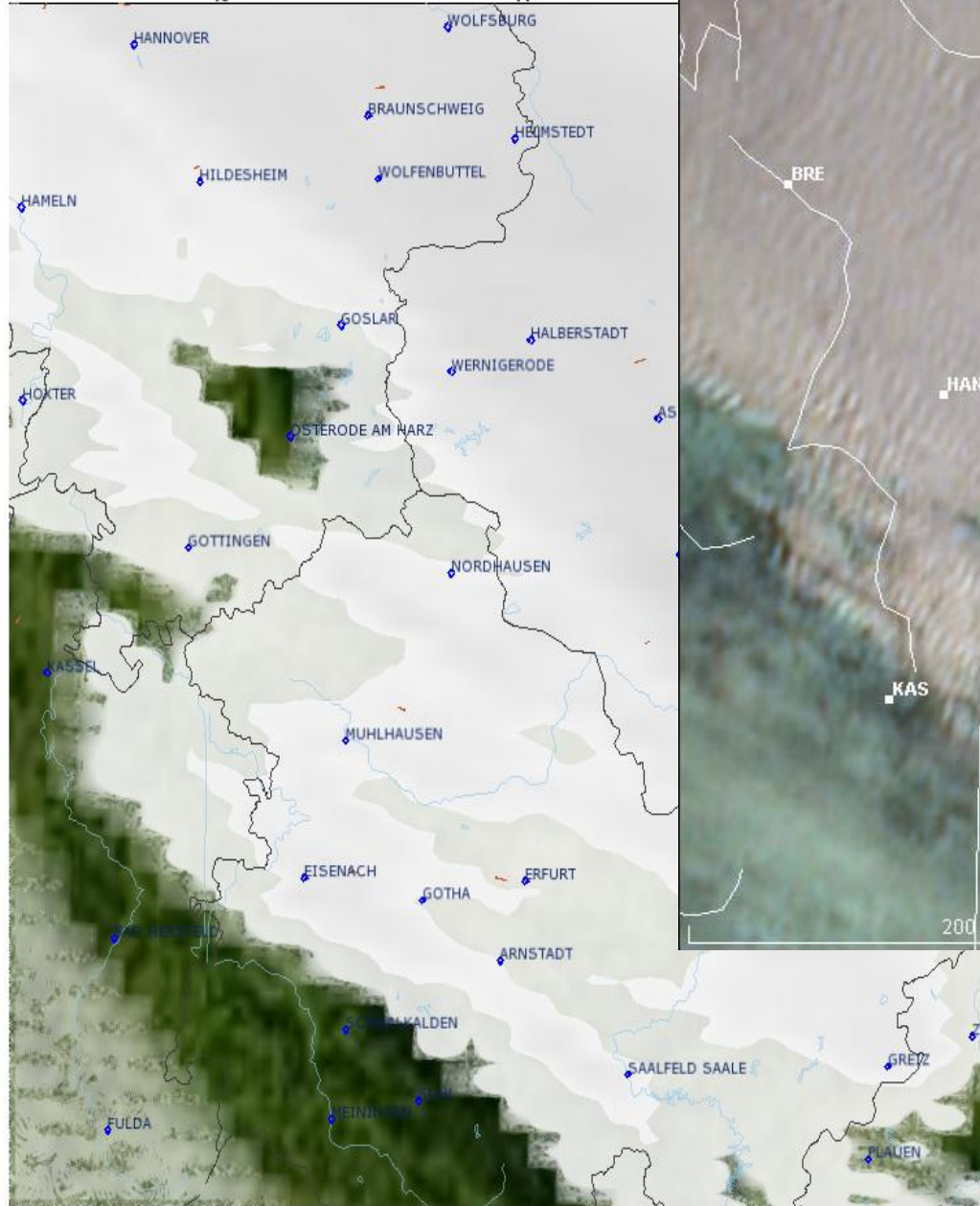
• RAIN MMHR
 ○ RAIN MMHR
 ★ RAIN MMHR
 ★ SNOW MMHR





(c) 2009 by meteoblue TM - www.meteoblue.com

Bewölkungsvorhersage



13.01.2010

Vorhersage und Wirklichkeit

- Übersicht
- Monatswetter
- Satellitenbild
- Wetter-Cams
- Radar
- Wetter aktuell
- Vorhersage
- Flugwetter
- Seewetter
- Seminar
- Umwelt-Wetter
- Klima
- Wetter-Videos
- Wetter-Archiv



13.01.2010

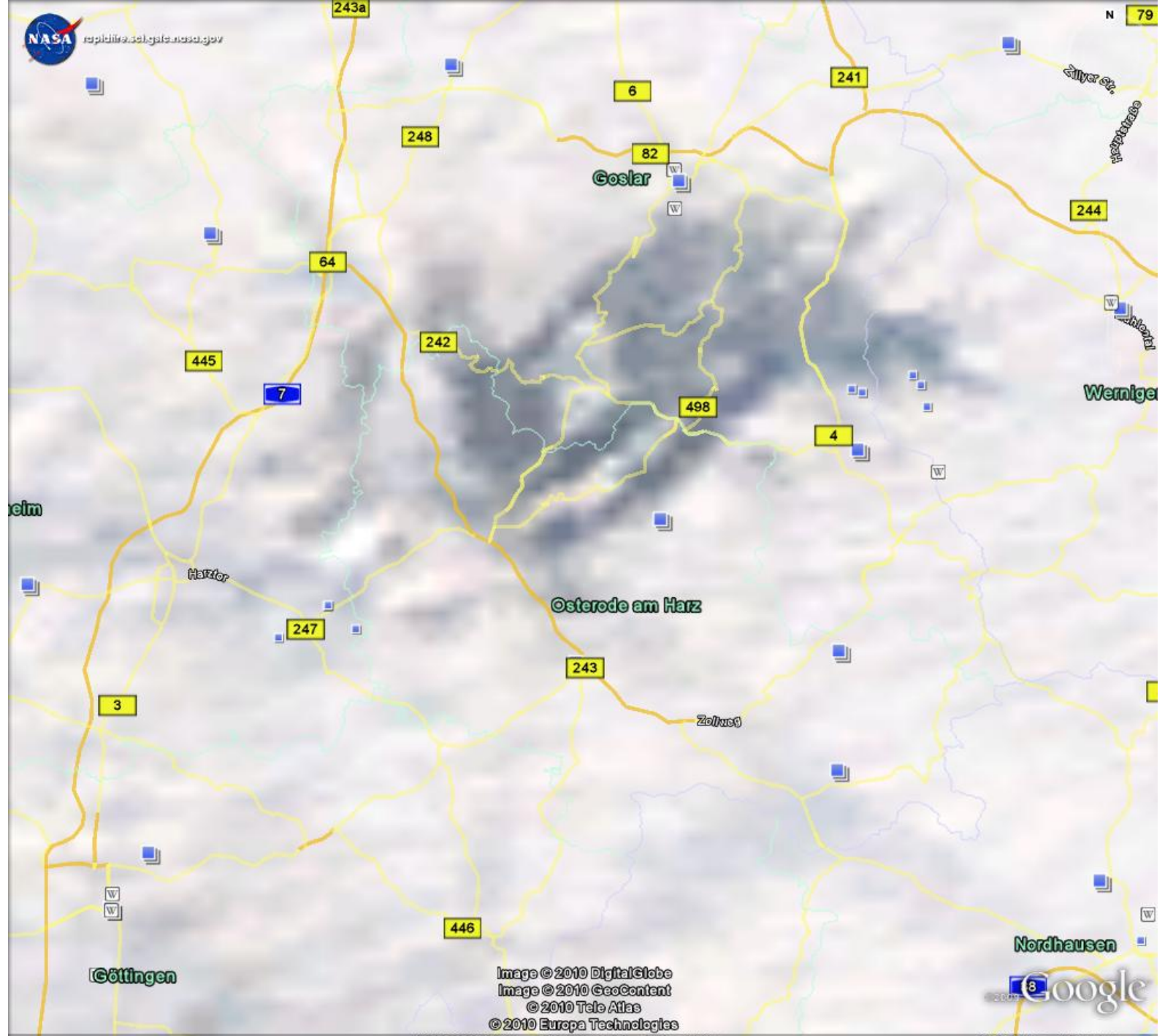
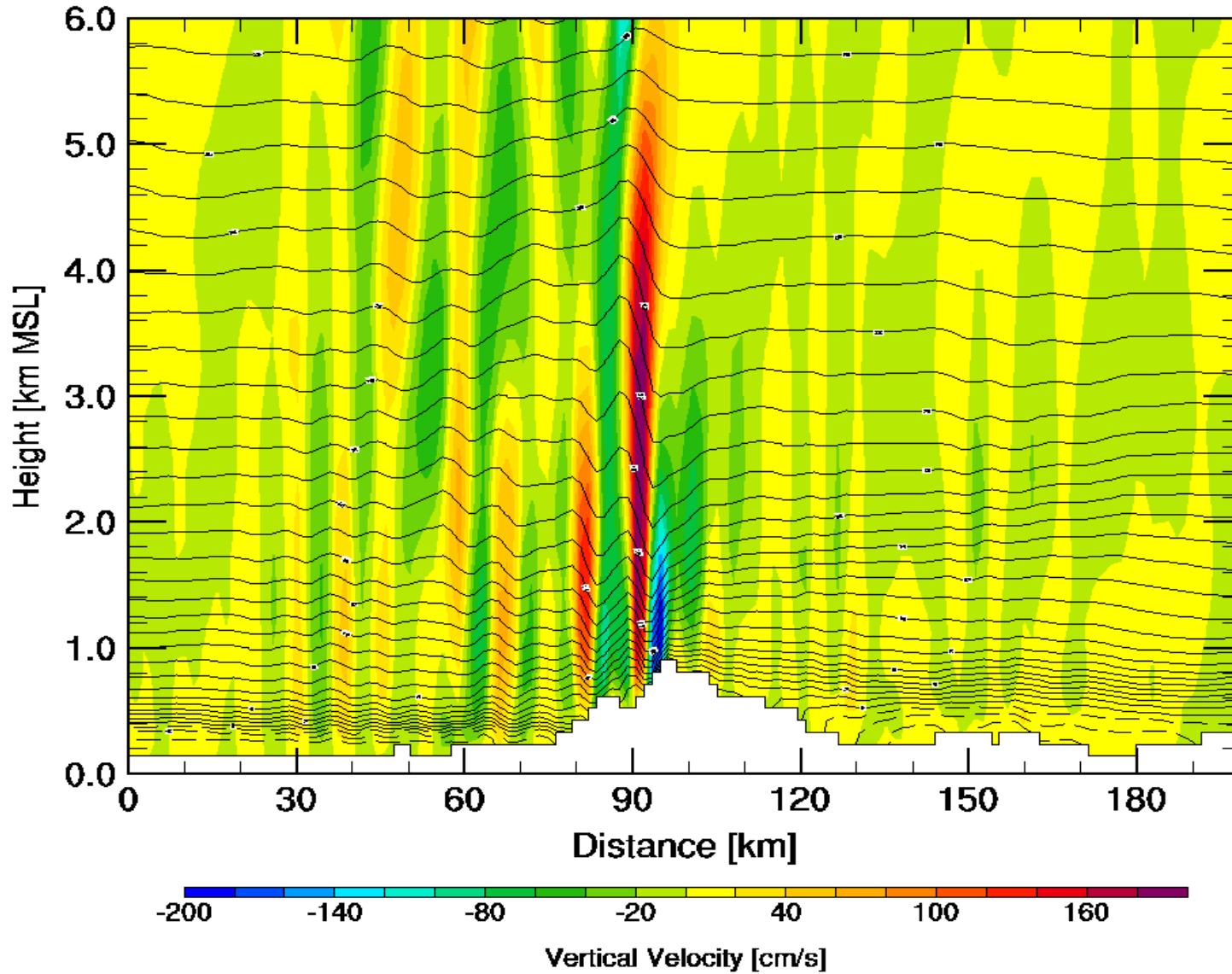


Image © 2010 DigitalGlobe
Image © 2010 GeoContent
© 2010 Tele Atlas
© 2010 Europa Technologies

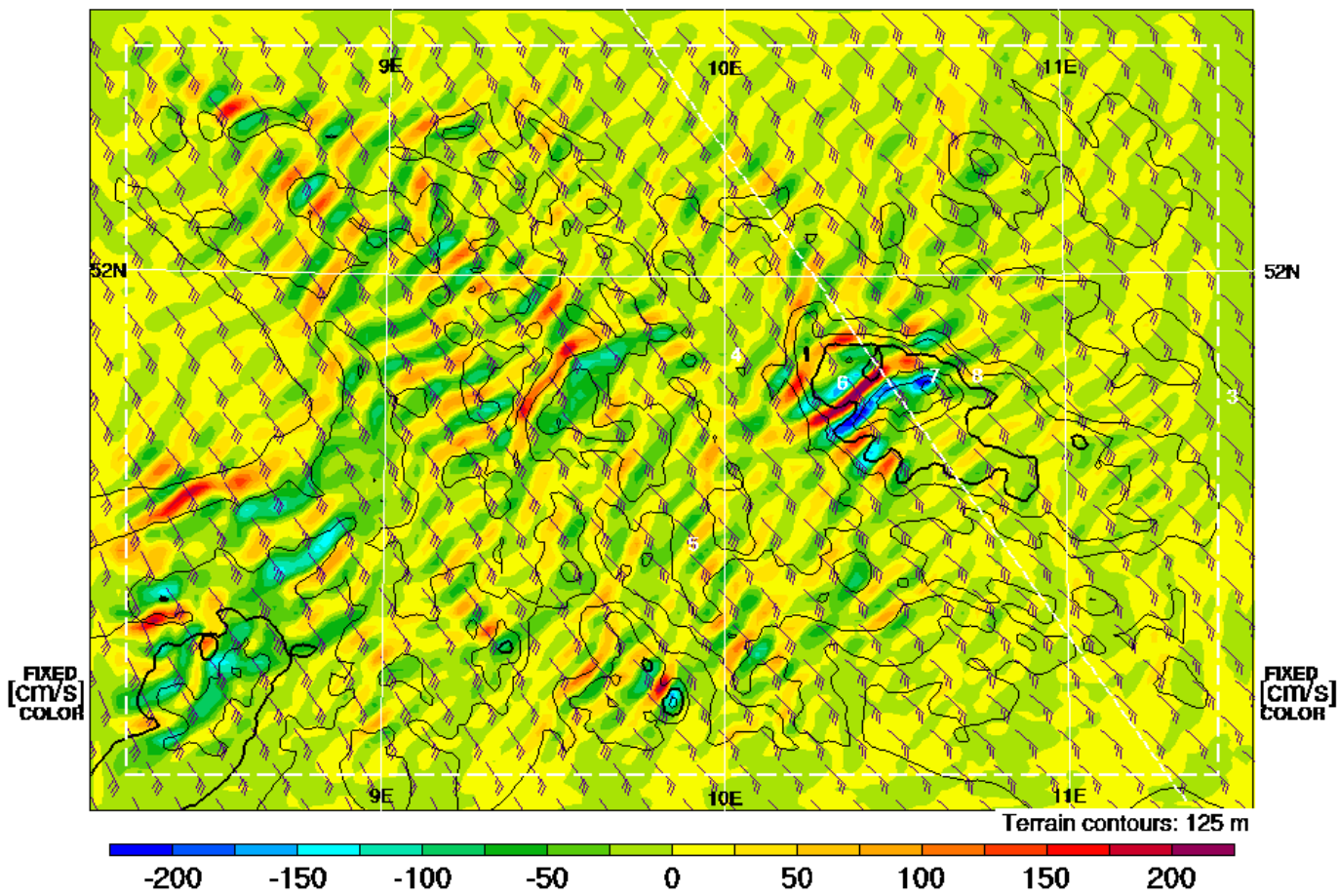
Wind-Parallel Section at Max W: Vertical Velocity & Pot.Temp. (c)

Valid 1300 CET (1200Z) WED 13 Jan 2010 [30hrFcst@1705z]

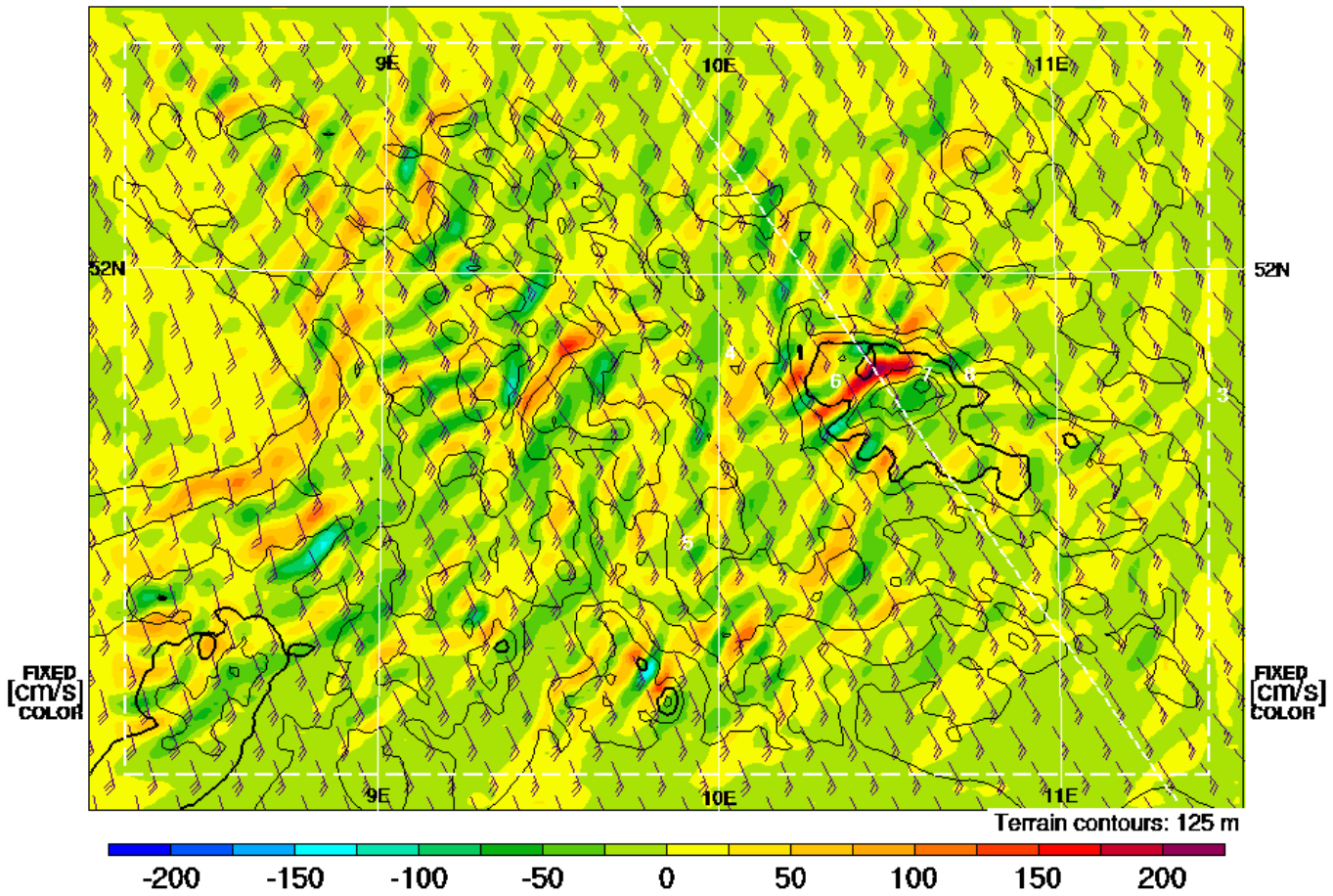
box:Wmax=269@51.82,10.45,1712m



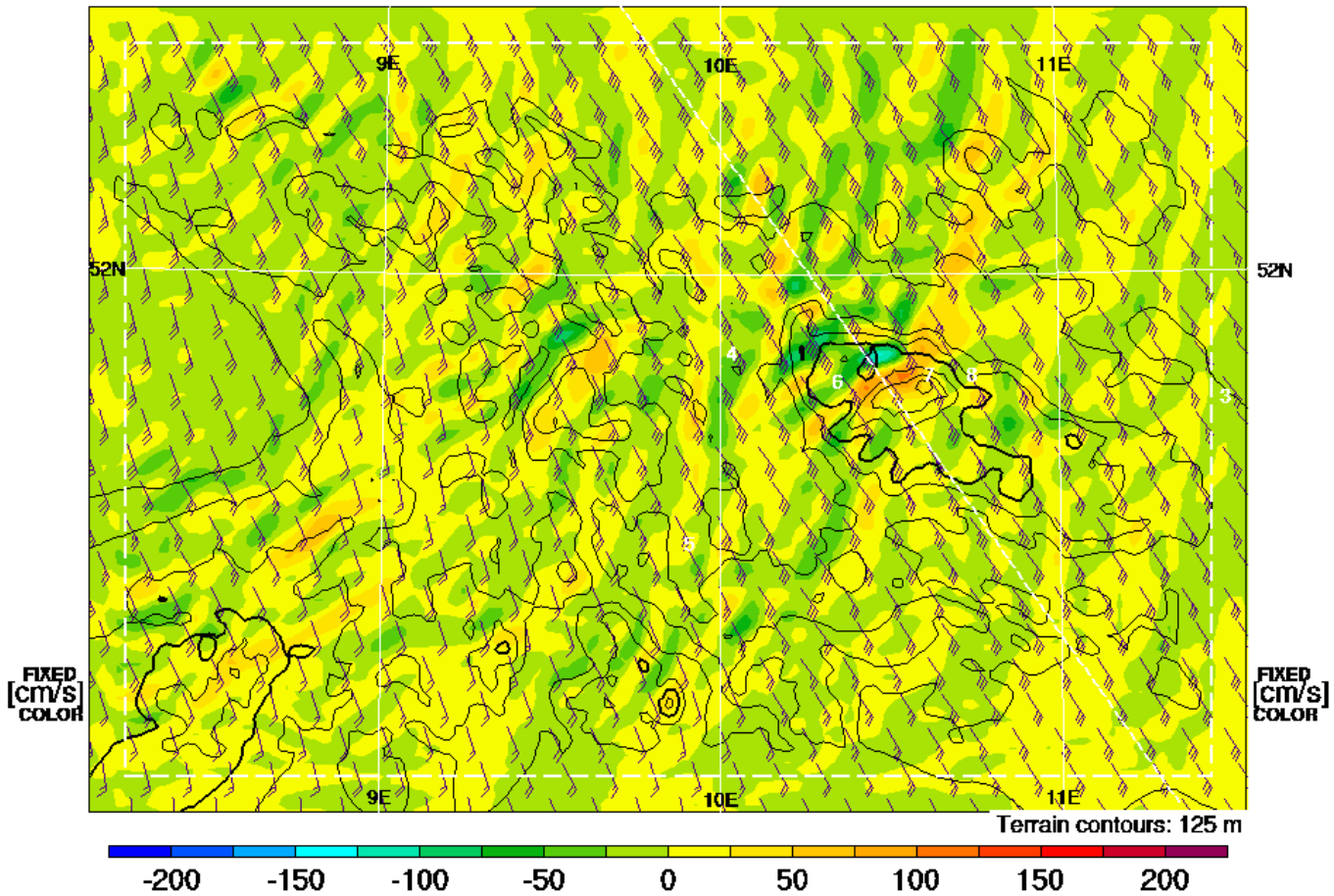
Vertical Velocity & Wind [kt] at 850mb
Valid 1300 CET (1200Z) WED 13 Jan 2010 [30hrFcst@1705z]
box Wmax=269@51.82,10.45,1712m



Vertical Velocity & Wind [kt] at 700mb
Valid 1300 CET (1200Z) WED 13 Jan 2010 [30hrFcst@1705z]
box Wmax=269@51.82,10.45,1712m



Vertical Velocity & Wind [kt] at 500mb
Valid 1300 CET (1200Z) WED 13 Jan 2010 [30hrFcst@1705z]
box Wmax=269@51.82,10.45,1712m

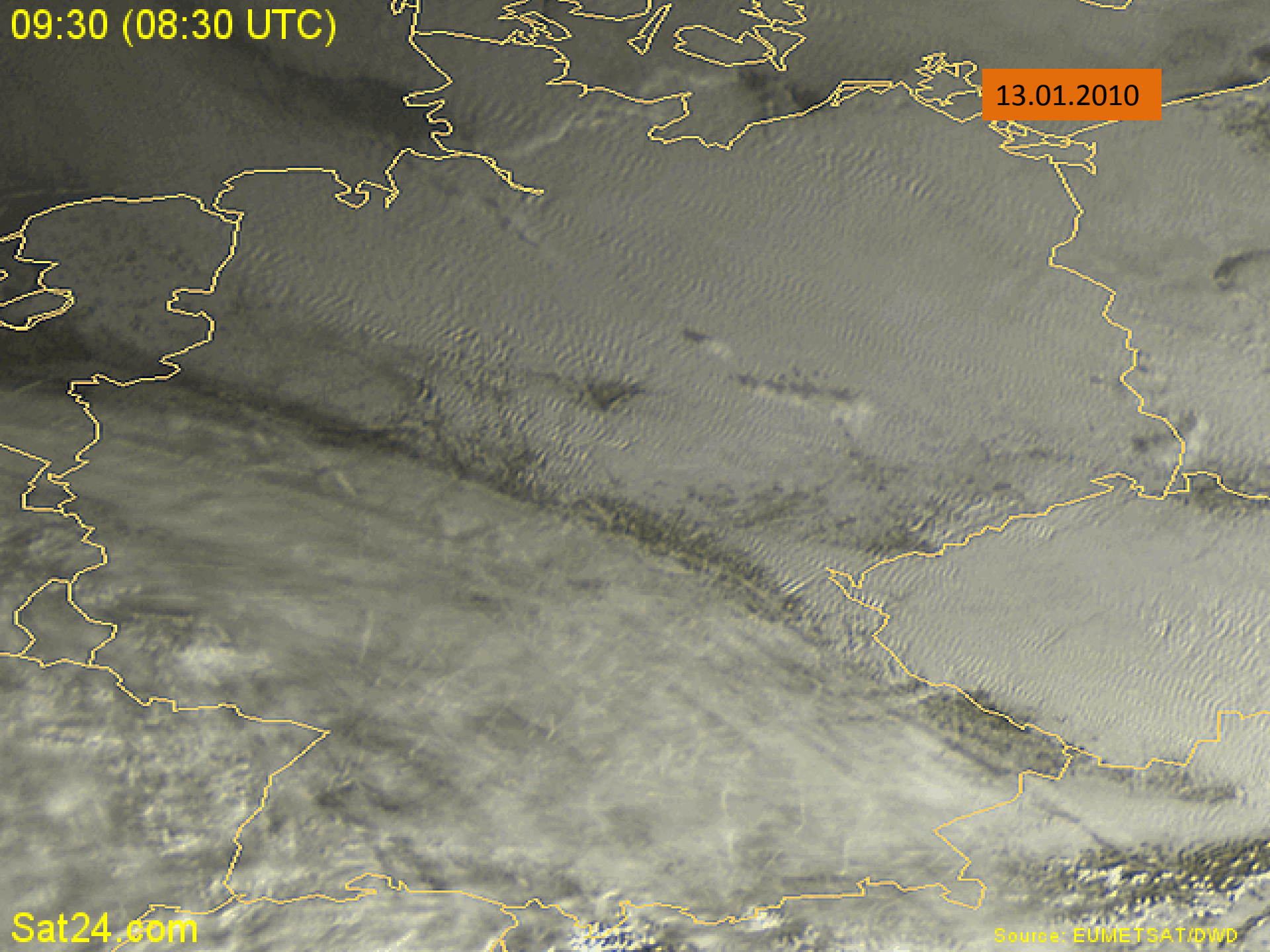


09:30 (08:30 UTC)

13.01.2010

Sat24.com

Source: EUMETSAT/DWD

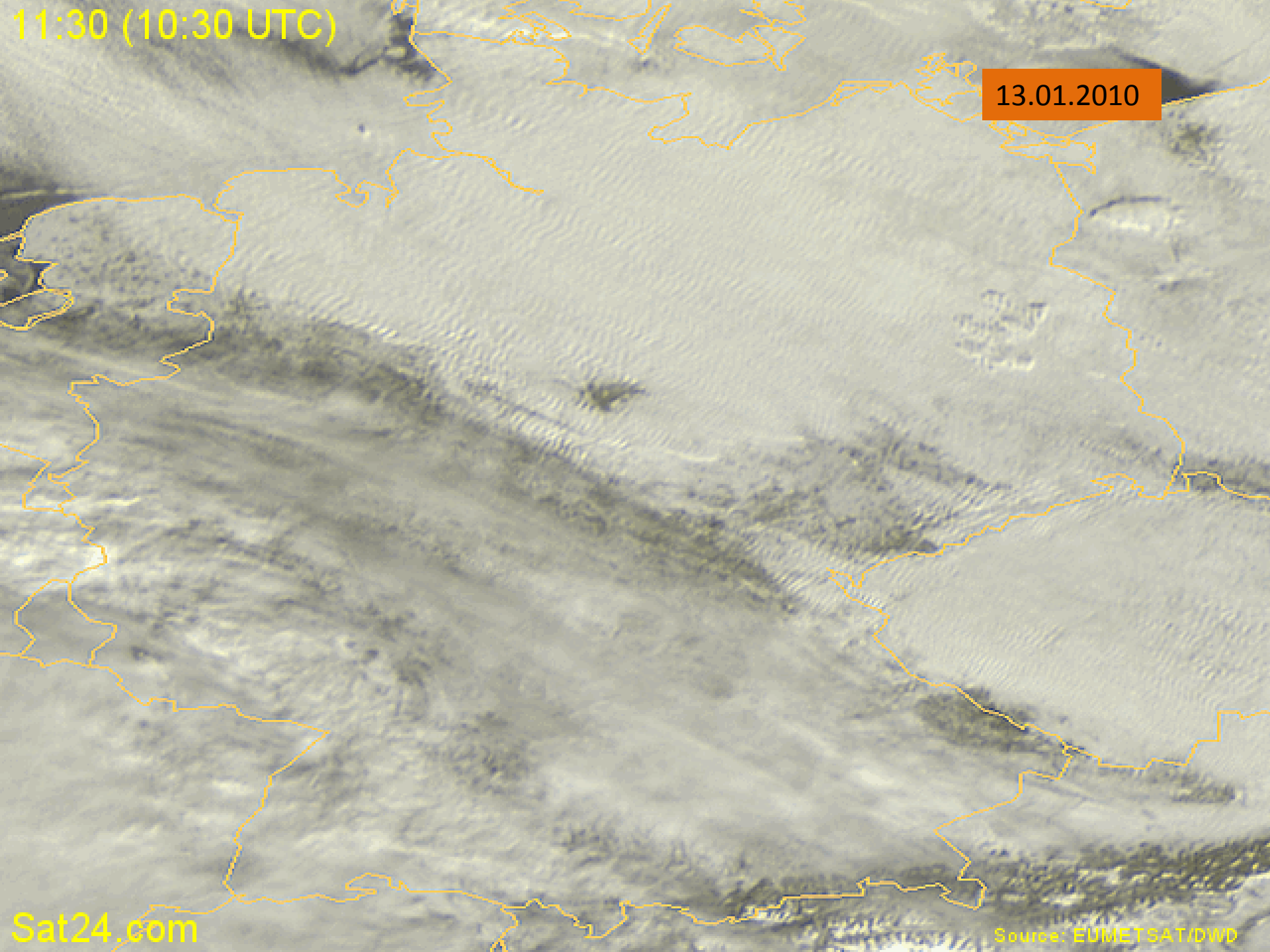


11:30 (10:30 UTC)

13.01.2010

Sat24.com

Source: EUMETSAT/DWD

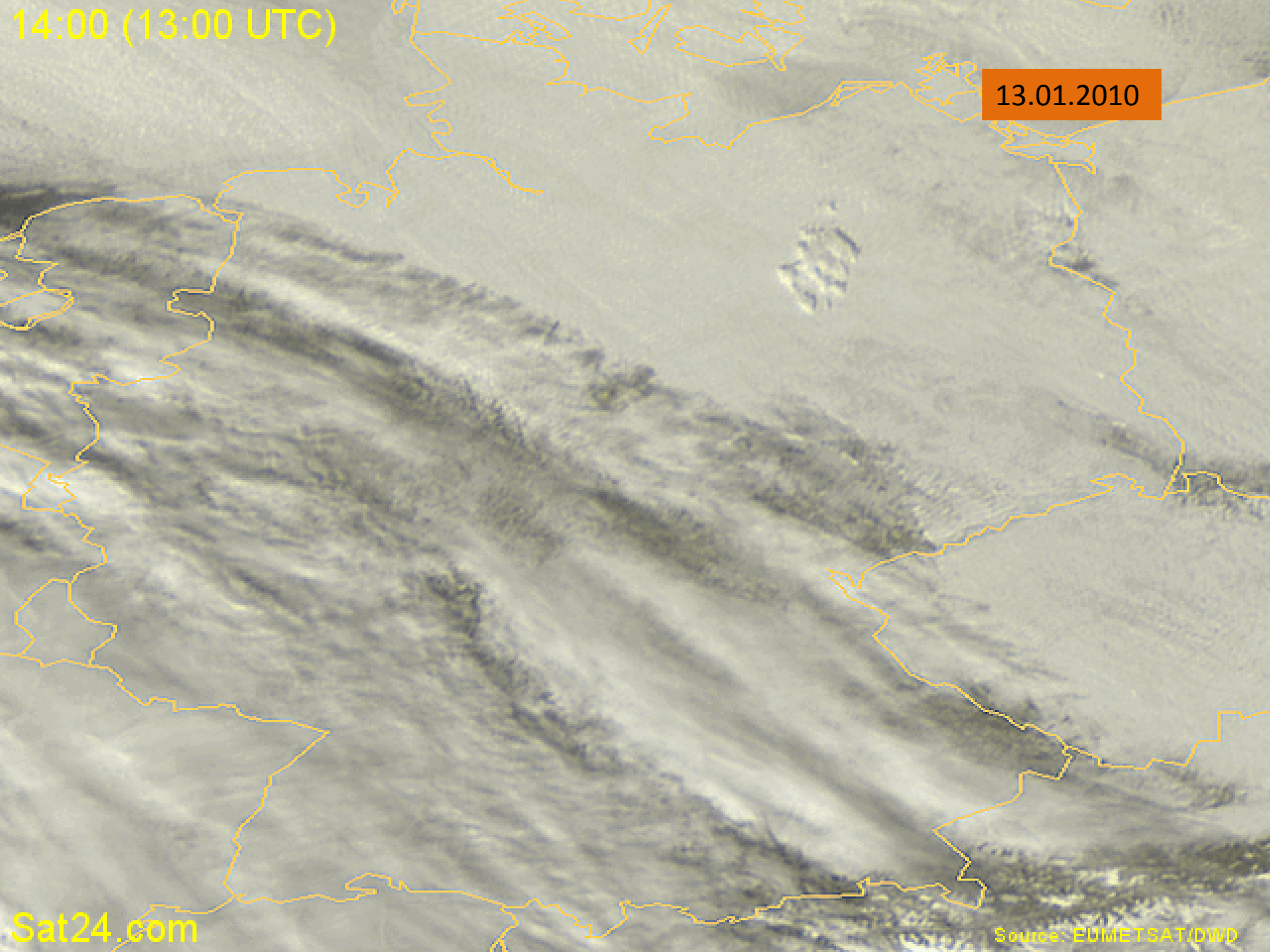


14:00 (13:00 UTC)

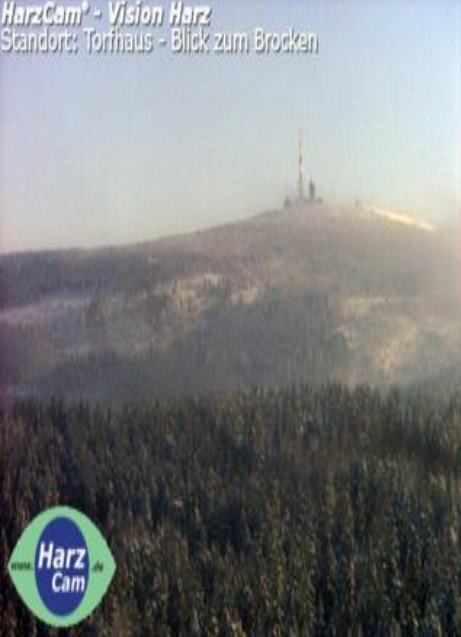
13.01.2010

Sat24.com

Source: EDMETSAT/DWD



HarzCam® - Vision Harz
Standort: Torfhaus - Blick zum Brocken



13.01.2010 12:00 MEZ
HarzCam® - Vision Harz
Standort: Torfhaus - Blick zum Brocken



www.harzcam.de

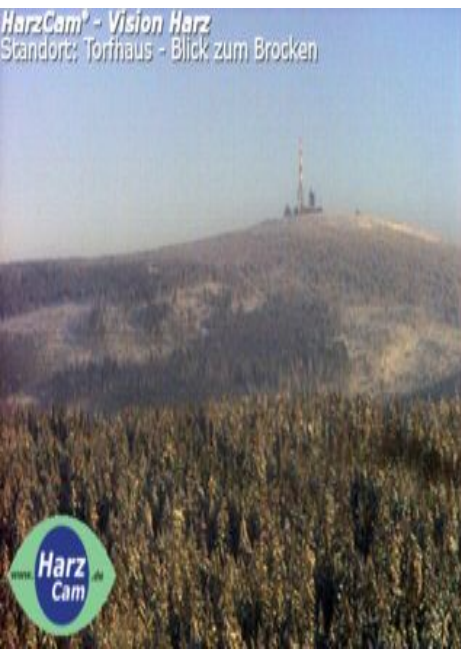


13.01.2010 13:00 MEZ



www.harzcam.de

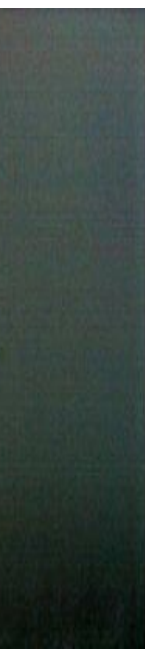
HarzCam® - Vision Harz
Standort: Torfhaus - Blick zum Brocken



13.01.2010 14:00 MEZ
HarzCam® - Vision Harz
Standort: Torfhaus - Blick zum Brocken



www.harzcam.de



13.01.2010 16:00 MEZ



www.harzcam.de



Leider kein Flugbetrieb möglich.
Moranebatterie + Treckerbatterie leer > rechtzeitig laden
Trecker kein Winterdiesel

Wie kann ein Grasplatz am besten vom Schnee geräumt werden
?

Ost-Welle
08.11.2003



Viele schöne Wellenflüge